



ADVANCED TUNABLE LED GARAGE CANOPY LIGHT

DESCRIPTION

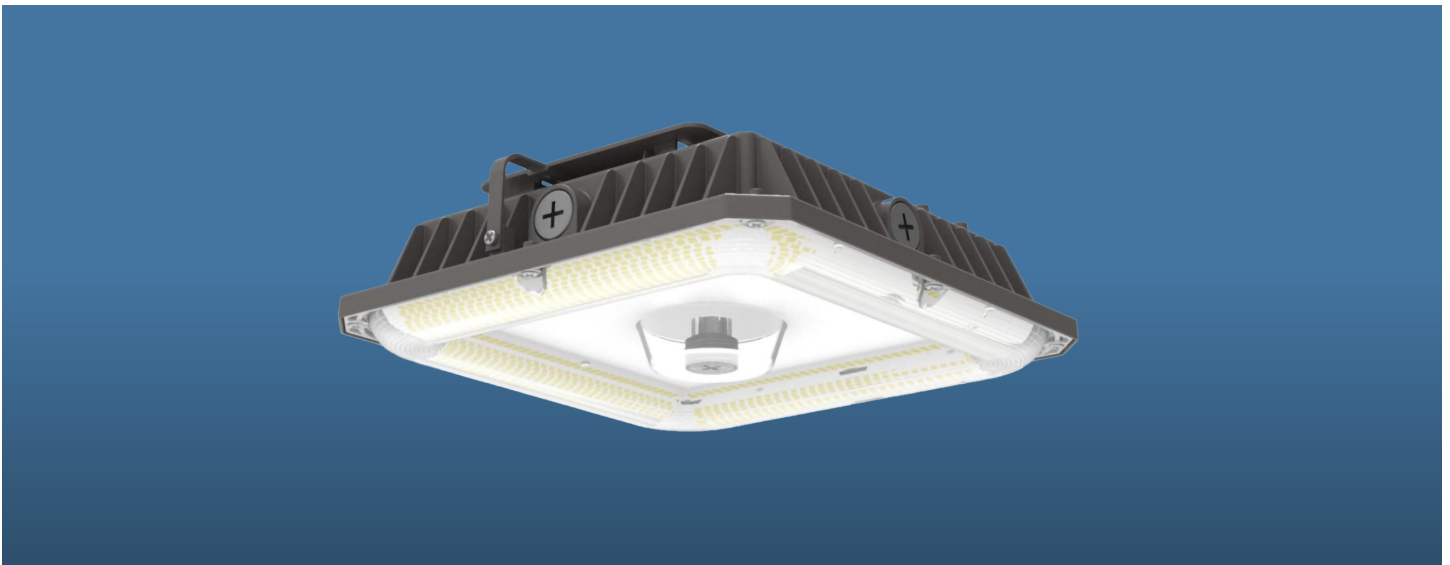
Jaykal's LED Area Light delivers superior photometric performance with uniform illumination, high efficacy, and an extended service life. Its low-profile design enhances aesthetics while maintaining optimal light distribution.

The luminaire features a one-piece die-cast aluminum housing with a UV-resistant powder coat finish, providing excellent thermal management and long-term corrosion resistance in demanding outdoor environments.

Engineered for ease of installation and reliable operation, this fixture is ideal for a wide range of commercial and outdoor applications, including auto dealerships, parking lots, walkways, roadways, campuses, facade lighting, grocery stores, and other public spaces.

FEATURES

- High luminous efficiency and long working life.
- High efficiency LED Driver, the wide range input voltage AC120-277V.
- Die Cast aluminum cooling design, high quality and better cooling for LED Tj <85°C .
- Excellent Optics design, greatly improve the light utilization and evenness.
- The 0-10V Dimming type is continuous.
- Motion sensor Control Available (OPTIONAL).



Revised 4/15/2026

Specifications are typical values and may change without notification



SPECIFICATIONS

MODEL	JLS-G5SC-M1
WATTAGE	100W/80W/60W/40W/30W
LUMENS	13,500/10,800/8,100/5,400/4,050lm
BUG RATING	B3-U3-G3
EFFICACY	135lm/W
CCT	3000K/4000K/5000K
CRI	>70
INPUT VOLTAGE	AC120-277V / AC120-347V
LIGHTING ANGLE	150°
OPERATING TEMPERATURE	-40°C ~45°C
STORAGE TEMPERATURE	-40°C ~70°C
PF	>0.9
DRIVER EFFICIENCY	>90%
THD	<20%
0-10V SINK CURRENT	<2mA
PROTECTION	Integral short circuit, open circuit, and overload protection
SURGE PROTECTION	L/N-PE 2kV;L-N 2kV
ENVIRONMENT	Wet Location
LIFE TIME (L70)	>50,000 hours
FCC	FCC 47 CFR Part 15 Compliance
WARRANTY	5 Year Standard / 10 Year Optional

ORDERING GUIDE

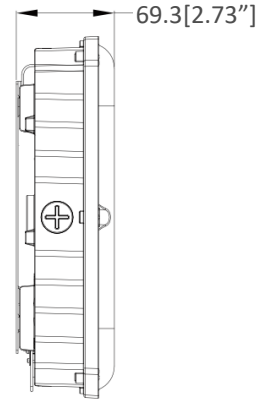
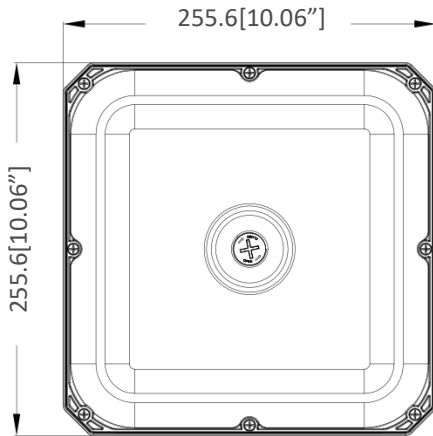
EXAMPLE : JLS-G5SC-M1-277-7MCCT-M

MODEL	-	WATTAGE	-	VOLTAGE	-	CCT	-	OPTIONS	DESIGNATION
JLS-G5SC	-	M1 = 30/40/60/80/100W	-	277 =120-277VAC 347 =120-347VAC	-	7MCCT = 3000K/4000K/5000K	-	Blank = No option PC = Photocell M = Motion Sensor EM = Emergency Backup	[TAA] [COM]

Specifications are typical values and may change without notification



DIMENSIONS

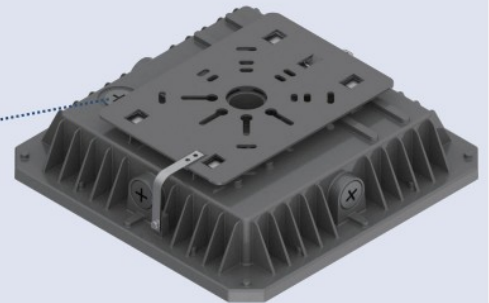


Easy, screw-in sensors for all your needs.

**WATT/CCT
SELECTABLE**



Easy installation with a mounting plate.



ACCESSORIES: (SOLD SEPARATELY)



JLS-ESS-EFS06
Microwave with Photocell



JLS-LLE-EFS106
PIR Bluetooth

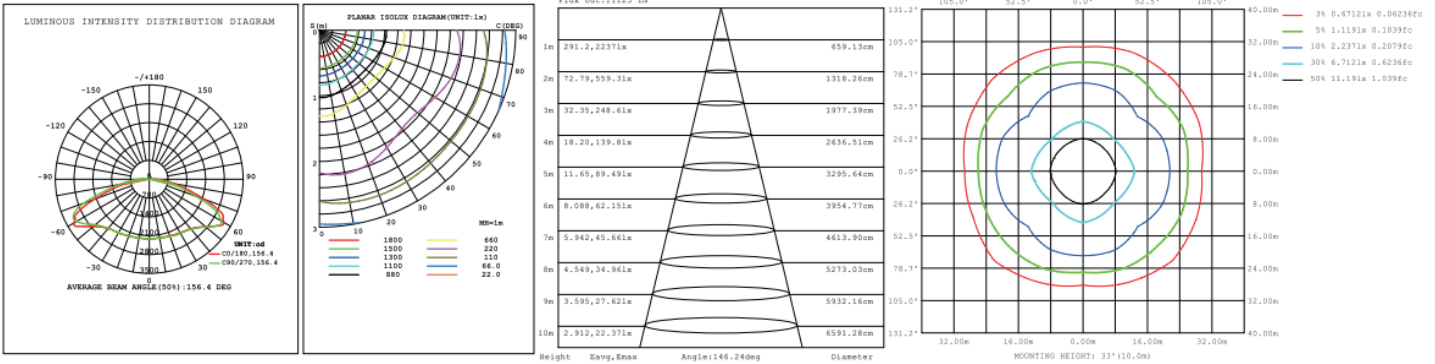


JLS-LLE-WPPA102-AUX
Bluetooth Node

Specifications are typical values and may change without notification



PHOTOMETRICS



INSTALLATION INSTRUCTIONS

Ceiling Installation:

1. Loosen the screw to take off the mounting plate from the lamp.
2. Screw the mounting plate to the ceiling.
3. Hang the lamp on the ring so as to connect wires with terminal caps.

Input/Dimmer Lamp

 - Green — Green
 - White — White
 - Black — Black
 - Dim- — Pink
 - Dim+ — Purple

this connection can be omitted if with non-dim driver
4. Hook up lamp on the mounting plate.
5. Secure the screw. Installation completed.

DIMENSIONS

Outer Box: 7*11.34 in. (4pcs/ctn.) 336*283*288 mm

Inner Box: 10.39*3.07*10.39 inch (1pcs/ctn.) 264*78*264 mm

N.W.: 18.08lbs./ctn. (8.2 kg/ctn)

N.W.: 4.52lbs./ctn. (2.05 kg/ctn)

G.W.: 20.50lbs./ctn. (9.3 kg/ctn)

G.W.: 5.01lbs./ctn. (2.33 kg/ctn)

Specifications are typical values and may change without notification