

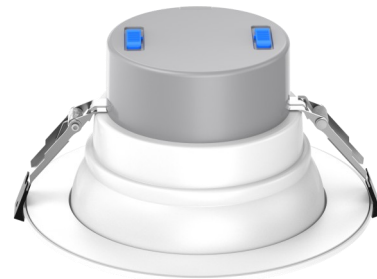


## ADVANCED MESH BLE Wireless Control Commercial Down light

### DESCRIPTION

### FEATURES

- Available in 4"/6"/8"/10" sizes
- 5 Wattage and 5 CCT are selectable by dip switch
- High light efficiency 100-120 LM/W, with flicker-free driver
- Type IC rated
- Integrated lamp design, giving it a simple and elegant overall appearance
- Two trim options: Smooth and Baffle styles
- Wet Location.



Revised 6/8/2026

*Specifications are typical values and may change without notification*



## SPECIFICATIONS

Size	4in	6in	8in	10in
Wattage Type	M1	M2	M3	M4
Rated Wattage	8/10/14/16W	15/18/22/26/30W	15/20/25/30/35W	20/25/30/35/40W
Rated Lumens@40K	860/1,000/1,400/1,600lm	1,650/2,000/2,200/2,600/3,00lm	1,900/2,400/2,950/3,400/3,800lm	2,400/2,950/3,400/3,800/4,050lm
Input Voltage	120-277VAC, 50/60Hz			
Dimming	Phase-cut / ELV / 0-10V Dimming			
Power Factor (PF)	>0.9			
THD	<20%			
CCT	2700K/3000K/3500K/4000K/5000K Selectable			
CRI	>80			
Beam Angle	80D		90D	
Efficacy	100 -120lm/W			
Flickering	Flicker-free (<10%)			
Materials	Aluminum housing, Optical PC diffuser			
Driver Box Finish	Grey			
Reflector finish	White standard			
Application Location	Indoor Wet location			
IC or Non-IC	IC Rated			
Operating Temp.	-20°C to 40°C			
Storage Temp.	-20°C to 65°C			
Protection	Integral short circuit, open circuit, and overload protection			
Lifetime	>50,000Hrs L70(TM21)			
FCC	FCC 47 CFR Part 15 Compliance			
Warranty	5 Year Standard / 10 Year Optional			

*Specifications are typical values and may change without notification*



## ORDERING GUIDE


For example: JLS-CR6-M2-8MCCT-S-P[COM]

MODEL	SIZE	-	WATTAGE	-	CCT	-	HOUSING	-	DIMMING	DESIGNATION
JLS-CR	4 = 4 Inch Can		M1 = 8/10/14/16W		8MCCT = 27/30/35/40/50K		S = Smooth*		P = Phase-Cut Dimming*	[COM]
	6 = 6 Inch Can		M2 = 15/18/22/26/30W							
	8 = 8 Inch Can		M3 = 15/20/25/30/35W							
	10 = 10 Inch Can		M4 = 20/25/30/35/40W							
							B = Baffle		* For 120VAC Only	
							* Default			

### Accessories (SOLD SEPARATELY)

	Goof Ring for 4"/6"/8"/10" downlight use	JLS-CR-GF-4/6/8/10
	New Construction Plate for Drywall	JLS-CR-NCP-D
	New Construction Plate for T-grid	JLS-CR-NCP-T

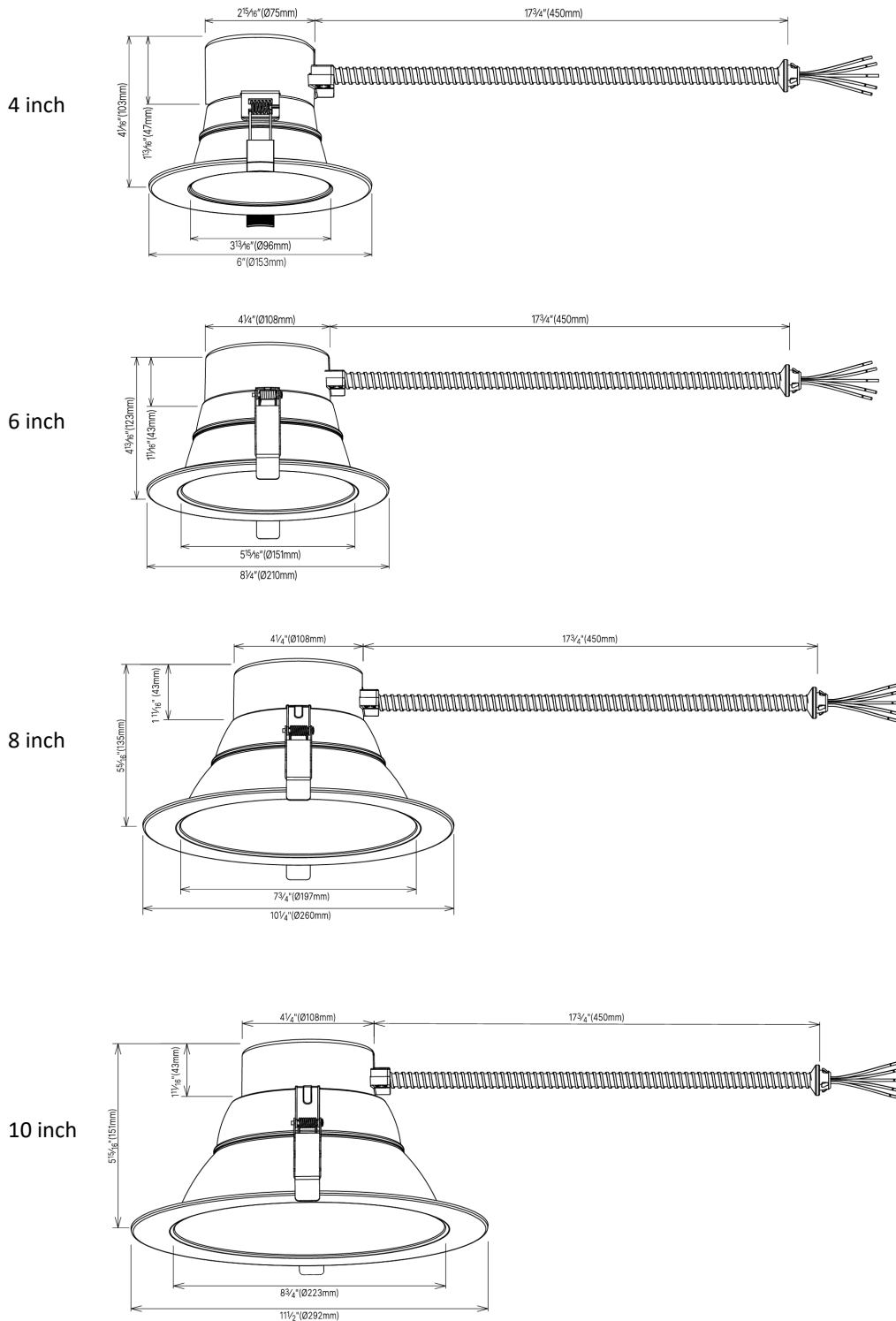
### EM Backups

	8W EM Backup	JLS6810D-G2EM-08170-HY
	18W EM Backup	JLS6810D-G2EM-18170-HY

*Specifications are typical values and may change without notification*



DIMENSIONS (Unit : Inch/mm)



*Specifications are typical values and may change without notification*