



**IMPORTANT SAFEGUARDS**

When using electrical equipment, basic safety precautions should always be followed including the following:

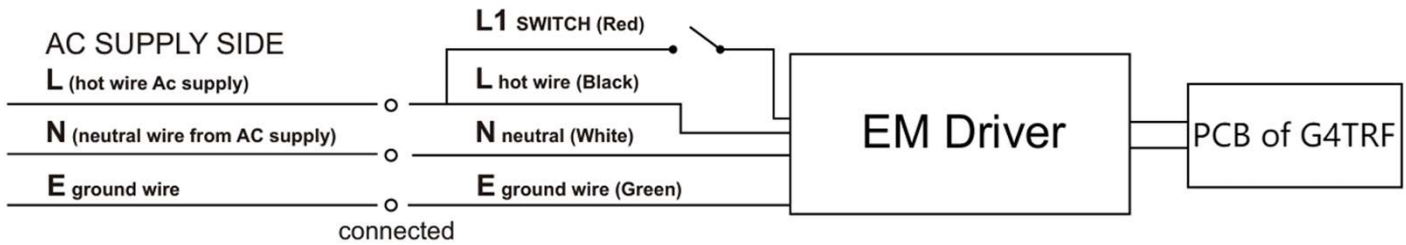
**READ AND FOLLOW ALL SAFETY INSTRUCTIONS**

- Do not use outdoors.
- Do not mount near gas or electric heaters.
- Equipment should be mounted in locations and at heights where it will not be subjected to tampering by unauthorized personnel.
- The use of accessory equipment not recommended by the manufacturer may cause an unsafe condition.
- Do not use this equipment for other than its intended use.

**SAVE THESE INSTRUCTIONS**

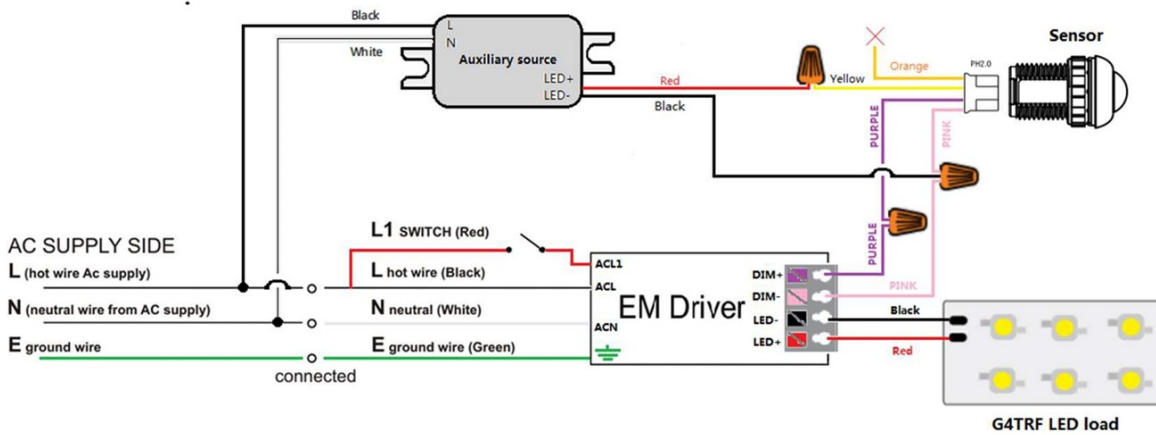
**SAVE THESE INSTRUCTIONS**

**1. Regular EM Type**



**2. EM Type with Sensor Application**

**WIRING DIAGRAM**





**Installation Steps:**

**Step 1.** Turn off AC power. Prepare all parts for the G4TRF Includes 1ea. light engine assembly, 2ea. long side reflectors, 2ea. end brackets, 1ea. EM driver.



**Step 2.** Install the emergency driver on the original panel housing. Use self-tapping screws to secure the EM driver to original housing on either of the side of the long dimension of the backbox. This is important to provide adequate space for the light engine to be installed

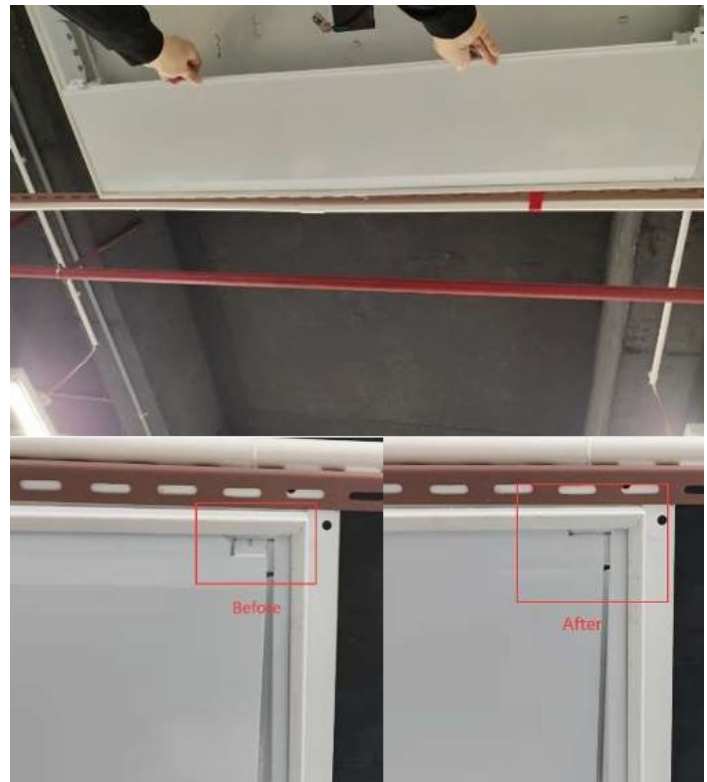


**Step 3.** Install the end bracket. Insert each end bracket under the edge of the original panel housing



**Step 4.** Install a long side reflector, include steps 1, 2, and 3 in three small steps

1. Insert the 2 tabs on the outside corners of the long side reflector into the end bracket slots. Perform this on the side opposite the EM driver.
2. Use a twist retainer to secure the long reflector to each end bracket.





3) Install the other long side reflector to the opposite side over the EM driver. Route the wires from the EM driver through the opening where the light engine will be mounted.



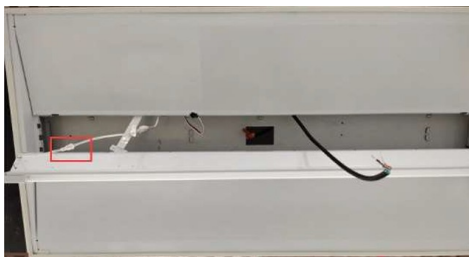
**Step 5.** Install light engine. Perform steps 1-7 below.

1) Hang light engine part to one of long side parts by hanging the hook of light engine on the notch of long side reflector

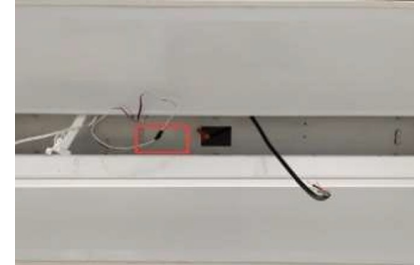


2) Make the wire connections, **PAY ATTENTION**, the wiring sequence is important, you need to follow the wiring connection sequence as shown below strictly, the sequence cannot be reversed.

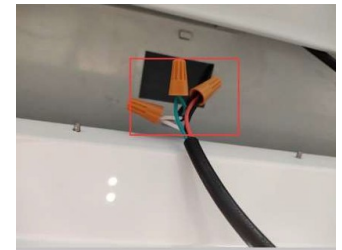
3) First connect wires from the light engine and from EM driver DC output, two wires are both white color, plug connection is keyed, female plug can be any one of four wires from EM driver



4) Second, connect the two wires (cable) both from EM driver, they are male plug and female plug, they are white/red/black color. Make sure to use a nylon tie to the wires to make wires



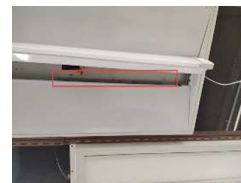
**Note: If G4TRF is equipped with EM and sensor, please follow above wiring diagram for the EM with Sensor to finalize the wiring connection.**



6) Secure the indicated ribbon cable from EM driver to the long reflector on the EM side. The back of the ribbon has adhesive to secure the head in place.



7) Move the exposed wires to the inside of fixture. Make sure they do not obstruct the light engine installation. Rotate the light engine into position and the lightly push it in. You should feel the clips engage.





**Step 6.** Turn on AC power supply switch and light up the troffer retrofit



**WARNING**

**THIS LUMINAIRE IS PROVIDED WITH A FACTORY INSTALLED EMERGENCY LIGHTING CONTROL DEVICE**