



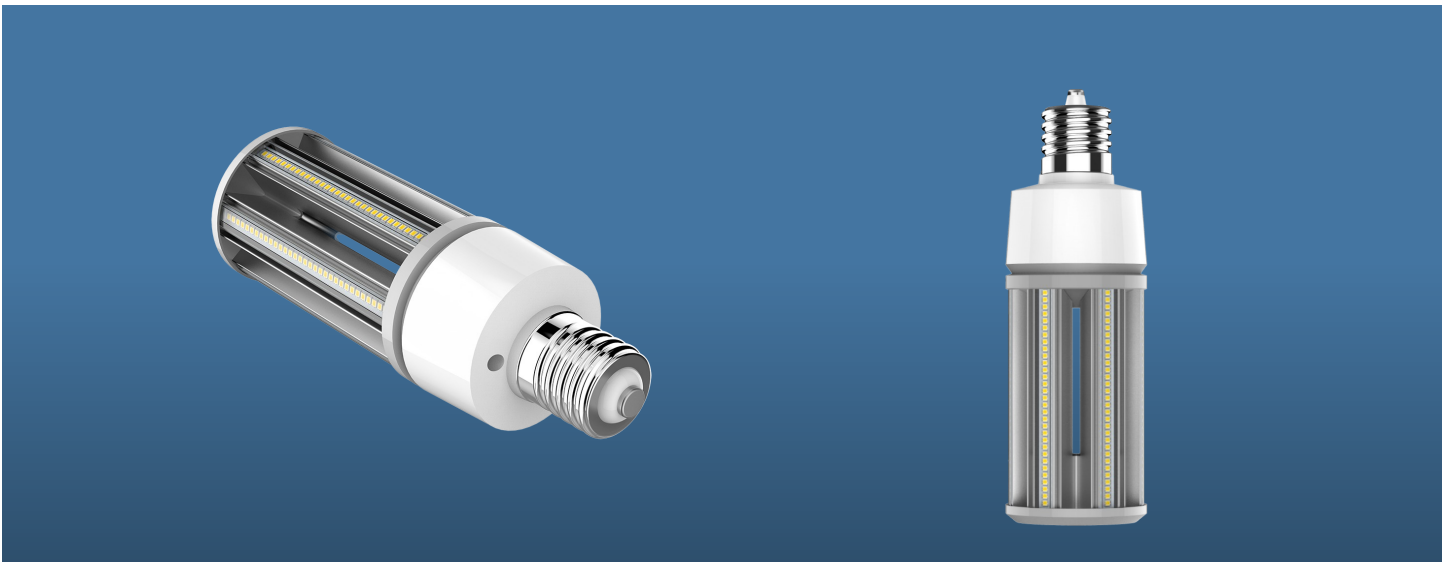
ADVANCED G2 LED CORN LAMP

DESCRIPTION

Jaykal's new generation LED Corn Lamp for indoor application with two lamp holder options

FEATURES

- Wattage Options : 27W to 54W
- CCT Options:
3000K/3500K/4000K/5000K/6000K
- Lamp holder Options : E26&E39
- 5 Year Warranty



ETL CLASSIFIED



Revised 4/29/2026

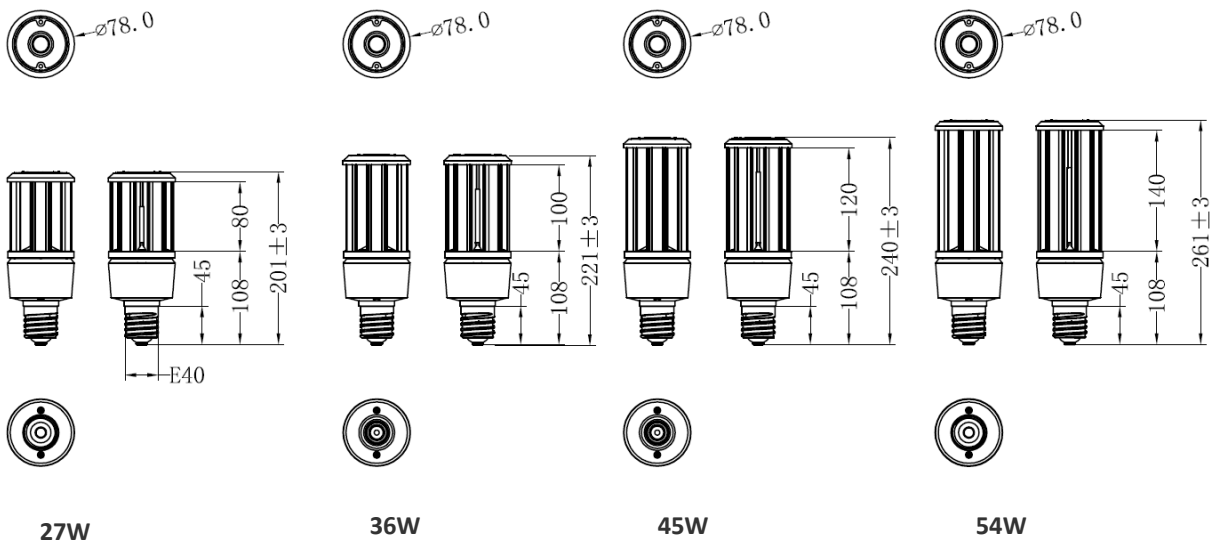
Specifications are typical values and may change without notification



JLS-G2CORN

Input Voltage	AC100-277V 50-60HZ			
WATTAGE	27W	36W	45W	54W
LUMENS	3,240lm	4,320lm	5,400lm	6,480lm
Lumen Efficiency@4000K	120 lm/W			
Equal to	100W HPS MHL	175W HPS MHL	200W HPS MHL	250W HPS MHL
PF	≥0.9			
CRI	≥80			
CCT	3000K/3500K/4000K/5000K/6000K			
DIMMING	Phase-cut dimming @120VAC			
Operation temp	-30-45°C			
Certificate	UL/DLC			
Dimension	E26 Φ78*185mm E39 Φ78*204mm	E26 Φ78*205mm E39 Φ78*224mm	E26 Φ78*225mm E39 Φ78*244mm	E26 Φ78*245mm E39 Φ78*264mm
Life time	50,000 hours			
Warranty	5 years			

DIMENSIONS (Unit : mm/inch)



Specifications are typical values and may change without notification



FEATURES



REPLACE



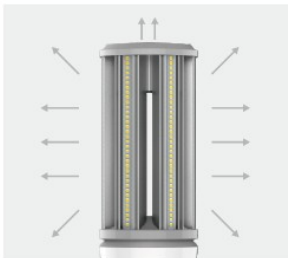
120lm/W



Omnidirectional type



Flame retardant material



01



Good heat dissipation and long service life



02



Less weight

03 Compact size for more luminaire



Post top



Shoe box



Cobra Head

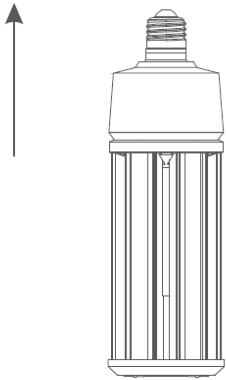
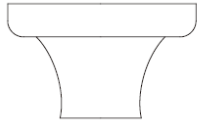


Flood light

Specifications are typical values and may change without notification

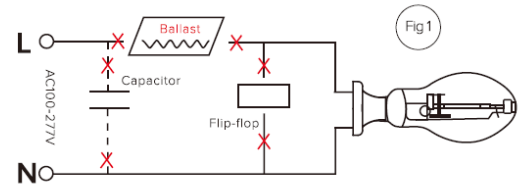


INSTALLATION



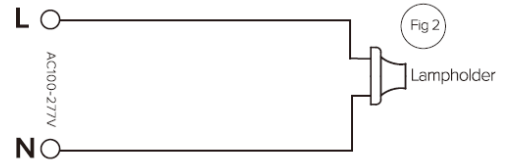
Step: 1

Shown as Figure 1
Remove old ballast or disconnect from existing lamp holder. Remove and dispose of ballast in correct manner.
(North America 100-277VAC)



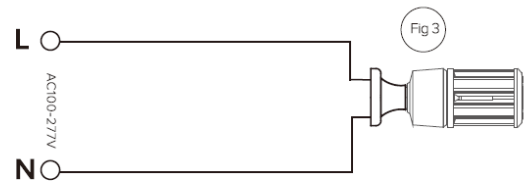
Step: 2

Shown as Figure 2
Reconnect directly to the existing lamp holder.
(North America 100-277VAC)



Step: 3

Shown as Figure 3
Install new LED replacement lamp. Please make sure the old fitting is correctly earth.
(North America 100-277VAC)





ORDERING GUIDE		EXAMPLE: JLS-G2CORN-36-4000K-E26	
MODEL	WATTAGE	CCT	HOLDER
JLS-G2CORN	27 = 27W	3000K = 3000K	E26 = E26 Lamp Holder E39 = E39 Lamp Holder
	36 = 36W	3500K = 3500K	
	45 = 45W	4000K = 4000K	
	54 = 54W	5000K = 5000K 6000K = 6000K	

Specifications are typical values and may change without notification