



## High Powered Ceiling Panel HPPNL Series

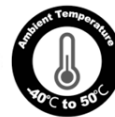
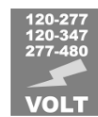
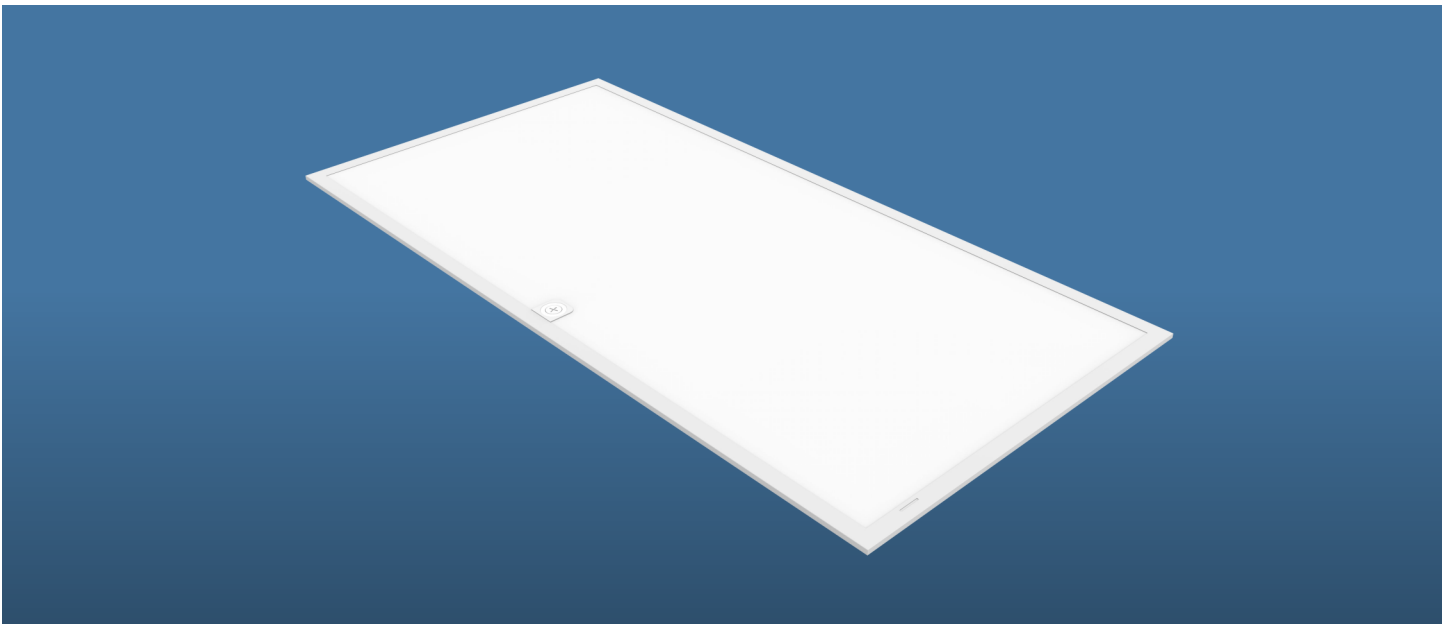
### DESCRIPTION

Jaykal's JLS-HPPNL is a high-illumination LED flat panel high bay luminaire engineered for commercial and industrial environments. The fixture supports both flush mounting and suspension via cable mounting, providing installation flexibility to meet diverse application requirements.

The luminaire features a sensor-ready driver platform designed to accommodate a wide range of lighting control strategies. It supports advanced Bluetooth mesh control

### FEATURES

- 160 LPW, 16,000 to 52,000 lumens.
- Audio-jack sensor socket optional[1].
- Field-adjustable Power and CCT(40K,50K).
- With OTP (Over Temperature Protection) function.
- 6kV High level surge protection.



Revised 4/20/2026

*Specifications are typical values and may change without notification*



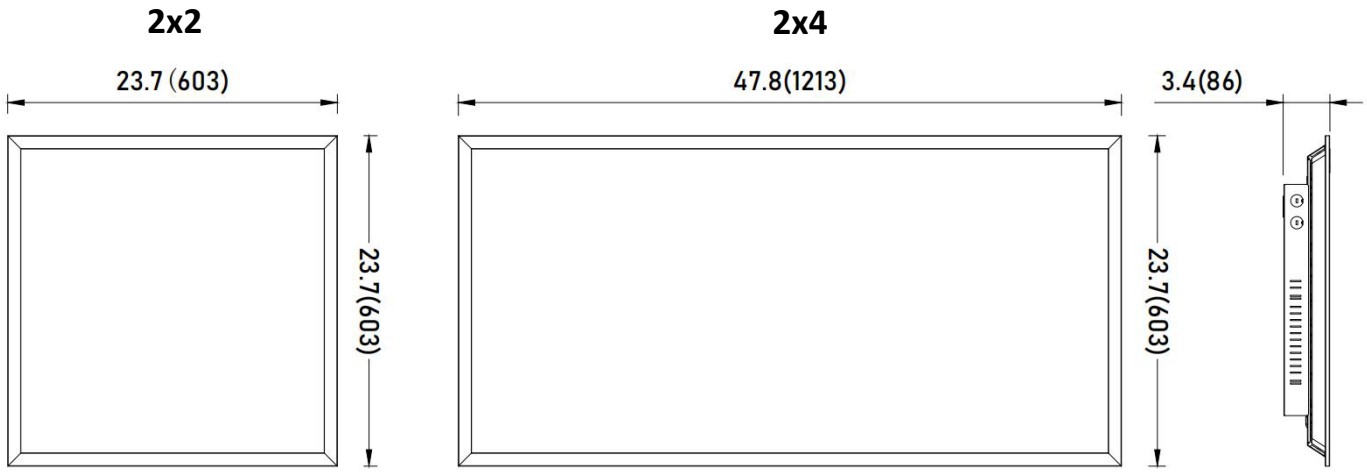
**ELECTRICAL**

MODELS	JLS-HPPNL	
LENGTH	2x2	2x4
TYPE	M1	M2
WATTAGE	100W/150W/210W	180W/260W/325W
INPUT VOLTAGE	120-277VAC 50/60hz / 120-347VAC 50/60Hz / 277-480VAC 50/60Hz	
EFFICACY	160lm/W	
LUMENS	16,000/24,000/34,000lm	29,000/42,000/52,000lm
POWER FACTOR	>0.9	
THD	<20%	
0-10V SINK CURRENT	<3mA	
PROTECTION	Integral short circuit, open circuit, overload, over temperature protection	
SURGE PROTECTION	6KV	
L70 HOURS	>100,000 Hours	
CRI	>80	
CCT	4000K/5000K Selectable	
BEAM ANGLE	90°	
OPERATION TEMP.	-20°C (-4°F) - 50°C (122°F) when fixture is suspension mounted at least 18" from ceiling or recessed mounted.	
LENS	Polycarbonate	
HOUSING	New generation die-cast aluminum design with light transmittance PC cover	
ENVIRONMENT	Damp Locations / Fixture is not IC rated and not suitable for insulation covering the driver box.	
FCC	FCC 47 CFR Part 15 Compliant	
WARRANTY	5 Year Standard / 10 Year Optional	

*Specifications are typical values and may change without notification*



**DIMENSIONS (Unit : inch/inch)**



*Specifications are typical values and may change without notification*



### ORDERING GUIDE

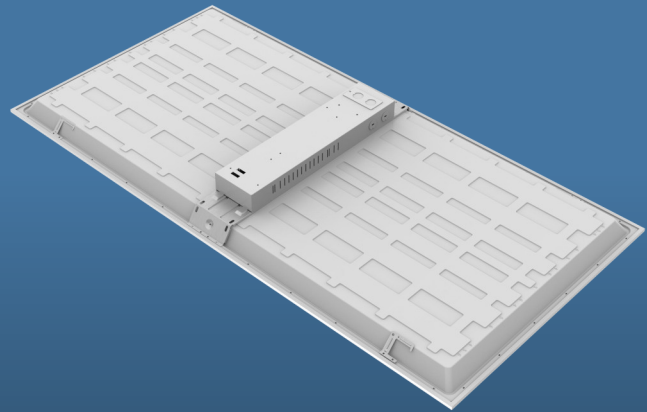
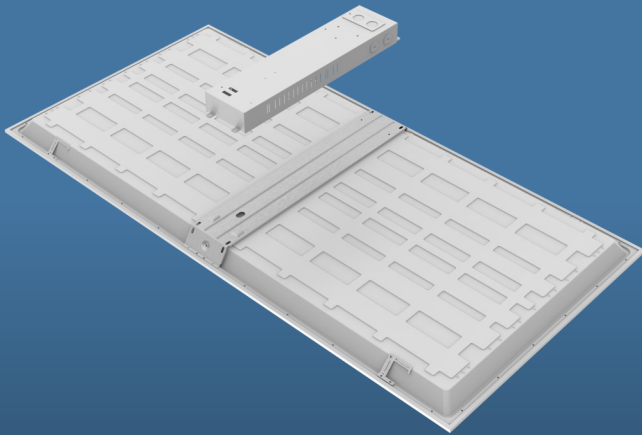
MODEL	SIZE	WATTAGE	CCT	VOLTAGE	EMERGENCY	DESIGNATION
JLS-HPPNL	22 = 2X2	M1 = 100W/150W/200W	8DCCT = 4000K/5000K	277 = 120-277V	N = None EM = Emergency Backup	[TAA]
	24 = 2X4	M2 = 180W/260W/325W		347 = 120-347V 480 = 277-480V		[COM]

### MOUNTING ACCESSORIES

JLS-HPPNL-SMK	Cable Suspension Mount Kit
JLS-HPPNL-FLANGE	Hard Ceiling Mounting Kit.



### ON-SITE DRIVER BOX INSTALLATION



*Specifications are typical values and may change without notification*