



TYPE B T8 LAMPS

JAYKAL

PROJECT NAME:

JAYKAL LED SOLUTIONS, INC.

www.jaykalusa.com

21499 Baltimore Ave.

Georgetown, DE 19947

(P) 302-295-0015

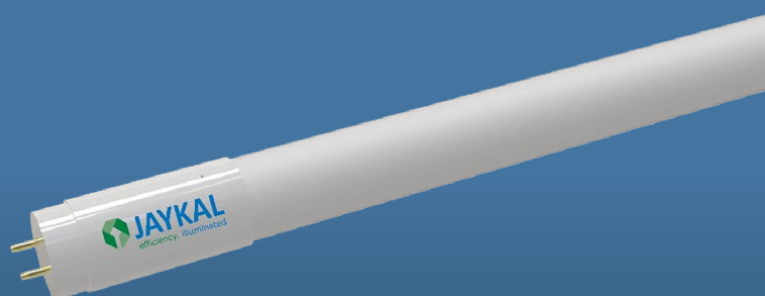
PROJECT NOTES:

PRODUCT DESCRIPTION

The Type B Tube features various length options, broad voltage compatibility, and multiple CCT choices to meet diverse lighting requirements. With its wide viewing angle, durable construction, and compliance with BAA/TAA standards, it is ideal for an wide range of applications. Additional features such as flicker-free operation, dimming capabilities, and emergency backup compatibility further enhance its versatility and reliability.

FEATURES

- Available in 2 and 4 ft. Lengths
- 120-277VAC Ballast Bypass
- CCT: 4000K/5000K
- 330° Viewing Angle
- TAA/BAA Available
- Suitable for Open and Enclosed Fixtures
- Drop Test Rating of 6 Feet
- For Use with Shunted and Unshunted Lampholders
- 5 Year Warranty 24/7 Operation



RoHS 
Compliant

Revised 12/6/24

Specifications are typical values and may change without notification

efficiency. illuminated.



TYPE B T8 LAMPS

JAYKAL

SPECIFICATIONS TABLE

T8 TYPE B LAMPS

INPUT VOLTAGE	120-277VAC 50/60hz			
LENGTH	2ft	4ft		
WATTAGE	6W	6W	9W	10.5W
EFFICACY	142lm/W	158lm/W	177lm/W	162lm/W
LUMENS	850lm	950lm	1,600lm	1,700lm
POWER FACTOR	<0.9			
THD	<20%			
VIEWING ANGLE	330°			
WIRING SCHEME	Single or Dual Ended			
CRI	Ra>80			
L70 Hours	>50,000			
CCT	4000K/5000K			
WORKING TEMP.	-20°C - +40°C			
ENVIRONMENT	Dry/Damp			

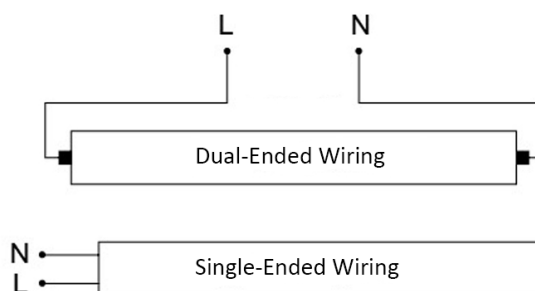
ORDERING GUIDE

JLS-4-840K-10.5W-DWD-S

MODEL	LENGTH	CCT	WATTS	TYPE	LUMEN PACKAGE
JLS	2 = 2 Foot	840K = 4000K 850K = 5000K	6W = 6W	DWD = Direct Wire Dual Ended	S = Standard
	4 = 4 Foot		9W = 9W		
			10.5W = 10.5W		

LENGTH	LENGTH PIN to PIN (in.)	LENGTH BASE to BASE (in.)	DIAMETER (in.)
4 Foot	47.71	47.16	1.09
2 Foot	23.77	23.15	1.09

WIRING DIAGRAMS



For Dual-Ended Lamps, the pins on each end of the lamp are internally shunted. The lamps may be used with shunted or un-shunted tombstones.

Specifications are typical values and may change without notification

efficiency. illuminated.