



G2 LED CORN LAMP

JAYKAL

PROJECT NAME:

JAYKAL LED SOLUTIONS, INC.

www.jaykal.net

PROJECT NOTES:

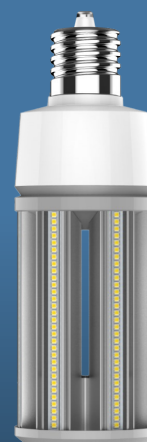
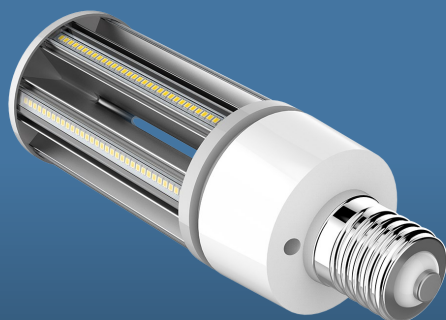
21499 Baltimore Ave.
Georgetown, DE 19947
(P) 302-295-0015
(F) 302-295-0016

PRODUCT DESCRIPTION

Jaykal's new generation LED Corn Lamp for indoor application with two lamp holder options

FEATURES

- Wattage Options : 27W to 54W
- CCT Options: 3000K/3500K/4000K/5000K/6000K
- Lamp holder Options : E27&E40
- 5 Year Warranty



ETL CLASSIFIED



RoHS 
Compliant

Revised 12/3/24

Specifications are typical values and may change without notification

efficiency. illuminated.



G2 LED CORN LAMP

JAYKAL

SPECIFICATIONS TABLE

JLS-G2CORN

INPUT VOLTAGE	AC100-277V 50-60HZ			
WATTAGE	27W	36W	45W	54W
LUMENS	3,240	4,320	5,400	6,480
EFFICACY@4000K	120 lm/W			
HPS EQUIVALENT	100W HPS MHL	175W HPS MHL	200W HPS MHL	250W HPS MHL
PF	≥0.9			
CRI	≥80			
CCT	3000K/3500K/4000K/5000K/6000K			
OPERATING TEMPERATURE	-30-45°C			
CERTIFICATION	UL/DLC			
DIMENSIONS	E27 Φ78*185mm	E27 Φ78*205mm	E27 Φ78*225mm	E27 Φ78*245mm
	E40 Φ78*204mm	E40 Φ78*224mm	E40 Φ78*244mm	E40 Φ78*264mm
LIFE(L70)	50,000 hours			
WARRANTY	5 years			

ORDERING GUIDE

EXAMPLE: JLS-G2CORN-36-4000K-E27

MODEL	-	WATTAGE	-	CCT	-	HOLDER	-	TAA
JLS-G2CORN		27 = 27W 36 = 36W 45 = 45W 54 = 54W		3000K = 3000K 3500K = 3500K 4000K = 4000K 5000K = 5000K 6000K = 6000K		E27 = E27 Lamp Holder E40 = E40 Lamp Holder		[TAA] = Laos

Specifications are typical values and may change without notification

efficiency. illuminated.



G2 LED CORN LAMP

JAYKAL

FEATURES



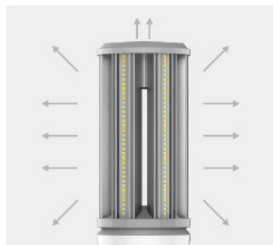
120lm/W



Omnidirectional type



Flame retardant material



01



Good heat dissipation and long service life



02



Less weight

03 Compact size for more luminaire



Post top



Shoe box



Cobra Head



Flood light

Specifications are typical values and may change without notification

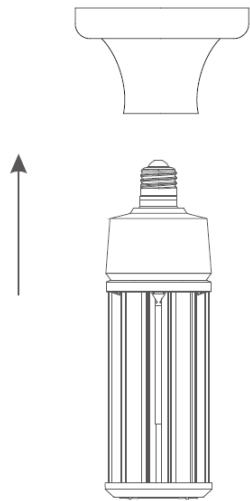
efficiency. illuminated.



G2 LED CORN LAMP

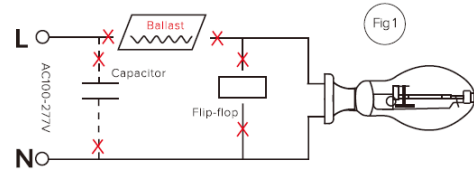
JAYKAL

INSTALLATION



Step: 1

Shown as Figure 1
Remove old ballast or disconnect from existing lamp holder. Remove and dispose of ballast in correct manner.
(North America 100-277VAC)



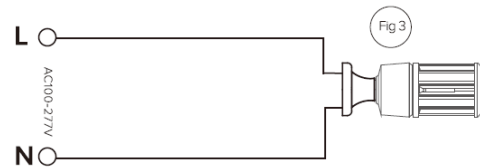
Step: 2

Shown as Figure 2
Reconnect directly to the existing lamp holder.
(North America 100-277VAC)

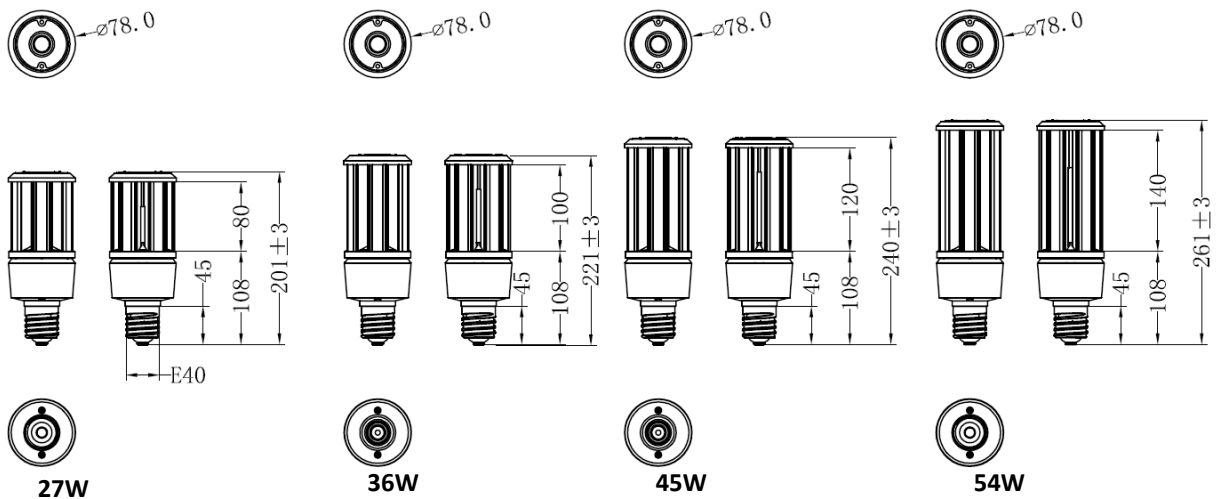


Step: 3

Shown as Figure 3
Install new LED replacement lamp. Please make sure the old fitting is correctly earth.
(North America 100-277VAC)



DIMENSIONS (Unit : mm/inch)



Specifications are typical values and may change without notification

efficiency. illuminated.