



G3 FULL CUTOFF WALL PACK

JAYKAL

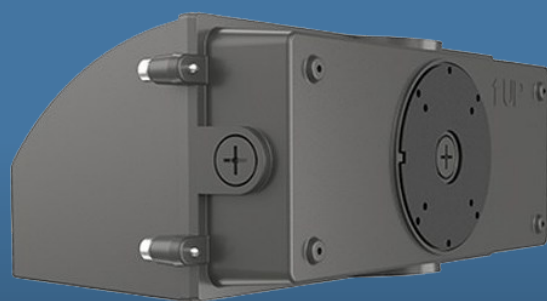
PROJECT NAME:	JAYKAL LED SOLUTIONS, INC. www.jaykal.net 21499 Baltimore Ave. Georgetown, DE 19947 (P) 302-295-0015 (F) 302-295-0016
PROJECT NOTES:	

PRODUCT DESCRIPTION

Jaykal Generation 3 wall pack features easy installation by moving all internal to the front half of the fixture. This allows the rear housing to be easily mounted to the wall. The rear housing includes a preinstalled J-box gasket, integrated level, 1/2" knockouts on all for sides and a drilling guide cast into the housing.

FEATURES

- Adjustable Wattage (4 settings)
- Adjustable CCT (3 settings)
- 0-10V Dimming
- Compatible with 0-10V Lighting Controls.
- IK08 Die-Cast Aluminum Housing with Tempered Glass Cover.
- Detachable Mounting Plate Fits Most Standard Junction Boxes or Can be Surface Mounted and Wired via Conduit Entries.



(P) 302-295-0015 | (E) sales@jaykal.net | (W) www.jaykal.net

Revised 1/22/25

Specifications are typical values and may change without notification

efficiency. illuminated.



G3 FULL CUTOFF WALL PACK

JAYKAL

SPECIFICATIONS

MODEL	JLS-G3FC-M1	JLS-G3FC-M2	JLS-G3FC-M3	JLS-G3FC-M4
WATTAGE	40W/30W/20W/10W	20W/40W/60W/ 80W	100W/75W/50W/25W	120W/90W/60W/30W
LUMENS	5,200/3,900/2,600/1,300	2,600/5,200/7,800/10,400	13,000/9,750/6,500/3,250	15,600/11,700/7,800/3,900
BUG RATING	B2-U2-G1	B3-U2-G1	B3-U2-G2	B3-U2-G2
EFFICACY	130lm/W (±10%)			
INPUT VOLTAGE	120-277VAC / 120-347VAC			
CCT	MCCT (3000K/4000K/5000K)			
CRI	>70			
EFFICIENCY OF DRIVER	≥86%			
CLASS LEVEL OF DRIVER	Class II			
SURGE PROTECTION	4KV			
THD	>20%			
INPUT FREQUENCY	50/60 Hz			
POWER FACTOR	≥0.90			
DIMMING	0-10V			
0-10V SINK CURRENT	<1mA			
IP RATING	IP65			
IK RATING	IK08			
CERTIFICATIONS	cETL / ETL / DLC Premium /Comply with FCC			
OPERATING TEMP.	-22°F to 113°F (-30°C to +45°C)			
LIFE (L70)	L70 @ 50,000Hrs			
FINISHES	Black /Bronze / Customized (Optional)			
ADDITIONAL OPTIONS	0-10V / Photocell / Motion Sensor			
WARRANTY	5 Years			
FCC	FCC TITLE 47 CFR PART 18 COMPLIANCE			
CERTIFICATIONS	ETL/DLC			



Scan for the DLC listing for this family of product. All variations may not be DLC listed.

(Requires a DLC account)

ORDERING INFORMATION

EXAMPLE: JLS-G3FC-M2-277-MCCT-B-PC

PC	WATTAGE	VOLTAGE	CCT	FINISH	OPTIONS
JLS-G3FC	M1 = 40W/30W/20W/10W M2 = 80W/60W/40W/20W M3 = 100W/75W/50W/25W M4 = 120W/90W/60W/30W	277 = 120-277VAC 347 = 120-347VAC	MCCT = (3000K,4000K,5000K)	B = Black C = Custom D = Dark Bronze	Blank = No option PC = Photocell M = Motion Sensor PM = Photocell + Motion Sensor

(P) 302-295-0015 | (E) sales@jaykal.net | (W) www.jaykal.net

Specifications are typical values and may change without notification

efficiency. illuminated.



G3 FULL CUTOFF WALL PACK

JAYKAL

FINISHES

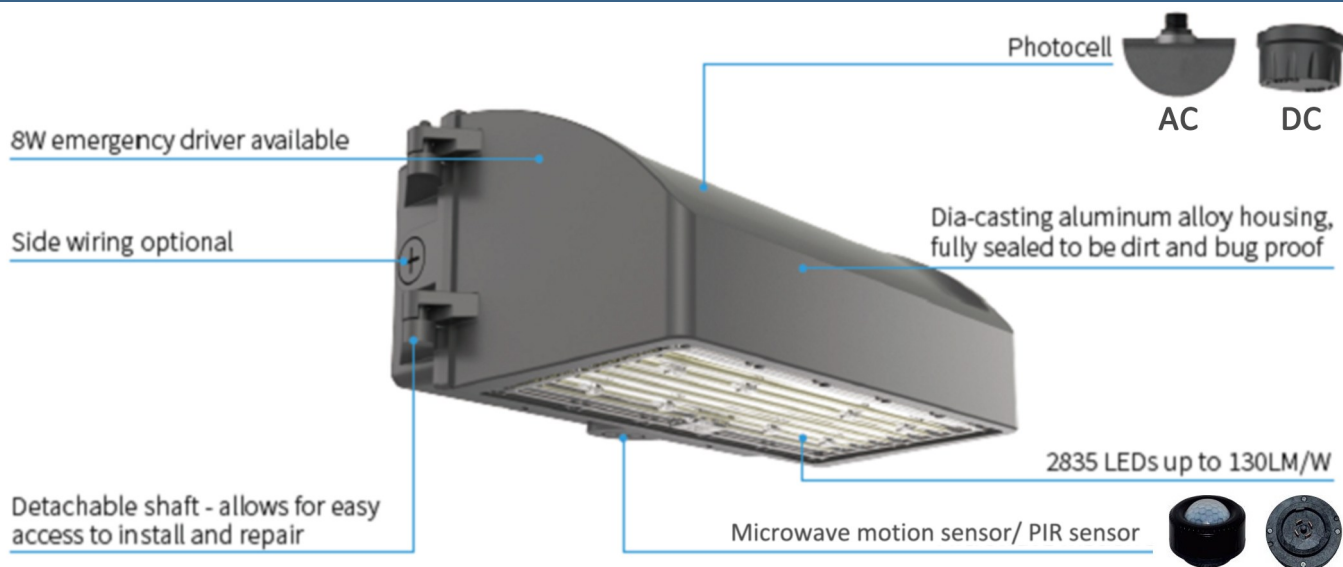


Bronze

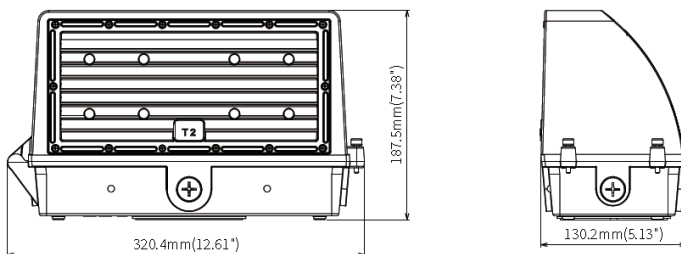


Black

FEATURES



DIMENSIONS



Model	PRODUCT DIMENSIONS (in.)	CARTON DIMENSIONS (in.)
JLS-G3FC-M1	12.6W X 5.1H X 7.3D	13.8 X 7.3 X 9
JLS-G3FC-M2		
JLS-G3FC-M3		
JLS-G3FC-M4		

(P) 302-295-0015 | (E) sales@jaykal.net | (W) www.jaykal.net

Specifications are typical values and may change without notification

efficiency. illuminated.