



## SENSOR READY ROUND HIGH BAY

## JAYKAL

PROJECT NAME:

**JAYKAL LED SOLUTIONS, INC.**

[www.jaykal.net](http://www.jaykal.net)

21499 Baltimore Ave.

Georgetown, DE 19947

(P) 302-295-0015

(F) 302-295-0016

PROJECT NOTES:

### PRODUCT DESCRIPTION

Jaykal's new sensor ready design enables any of our accessory sensors to be installed by simply plugging in the desired version of LumaLinx sensor. If no controls are needed now, they may be added later, with a simple plugin installation. The fixture is suitable for commercial and retail applications.

Wattage and color selectability is standard, allowing field tuning to meet changing project requirements. It featuring three wattage presets and three color presets and is DLC listed.

### FEATURES

- Wattage Selectable: From 70W to 240W
- CCT Selectable: 3500K/4000K/5000K
- 0-10V Dimming Standard
- Sensor Ready Design
- Optional Mounting Accessories
- EM Ready



Revised 12/17/24

*Specifications are typical values and may change without notification*

**efficiency. illuminated.**



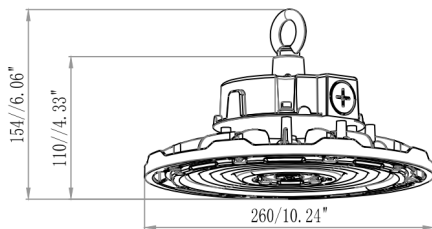
# SENSOR READY ROUND HIGH BAY

**JAYKAL**

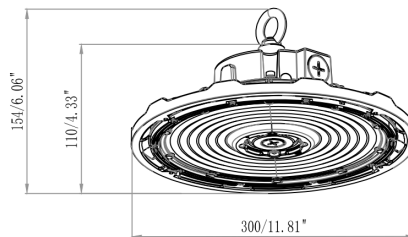
## SPECIFICATIONS TABLE

MODELS	JLS-G4HB			
INPUT VOLTAGE	120-277VAC 50/60Hz / 277V-480VAC 50/60Hz			
WATTAGE TYPE	M1	M2	M3	M4
WATTAGE	70W/85W/100W	85W/120W/150W	115W/160W/200W	140W/190W/240W
EFFICACY @50K	145lm/W			
LUMENS	10,150/12,325/14,500LM	12,325/17,400/21,750LM	16,675/23,200/29,000LM	20,300/27,550/34,800LM
L70 HOURS	100,000 hrs. +			
POWER FACTOR	>0.9			
DIMMING	0-10V Dimming			
THD	<20%			
CRI	>80			
FLICKER	Flicker Free (≤ 10%)			
SURGE PROTECTION	6KV			
CCT	MCCT (3500K/4000K/5000K Selectable)			
OPERATIONAL TEMP.	-40°C (-40°F) to 50°C (122°F)			
LENS (OPTIONAL)	Polycarbonate			
HOUSING MATERIAL	Aluminum Die Cast			
UL RATING	Suitable for Wet Locations			

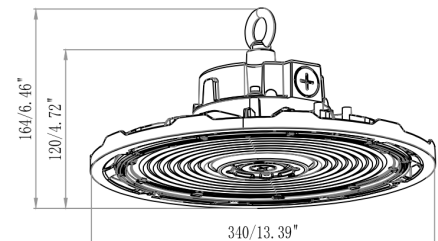
## DIMENSIONS (Units : mm/Inch)



**M1 (100W) & M2 (150W)**



**M3 (200W)**



**M4 (240W)**

*Specifications are typical values and may change without notification*

**efficiency. illuminated.**



## SENSOR READY ROUND HIGH BAY

JAYKAL

### Ordering Guide

Example: JLS-G4HB-S-M1-277-MCCT

MODEL	-	WATTAGE	-	VOLTAGE	-	CCT
JLS-G4HB-S		<b>M1</b> = 70W/85W/100W <b>M2</b> = 85W/120W/150W <b>M3</b> = 115W/160W/200W <b>M4</b> = 140W/190W/240W		<b>277</b> = 120-277VAC <b>480</b> = 277-480VAC		<b>MCCT</b> = 3500K/4000K/5000K

### EM BACKUPS ACCESSORIES

30W Emergency Backup (for 100W/150W 277V type)	JLS-G4HB-30W-EM
40W Emergency Backup (for 200W/240W 277V type)	JLS-G4HB-40W-EM



JLS-G4HB-30W-EM

### Controls

#### LumaLinX ESSENTIAL SENSORS

0-10V Bi-Level PIR Motion Photo Sensor. 50ft. Maximum Height	JLS-LL-EFS07-AUX
Programming Remote	JLS-LL-RM51

#### LumaLinX ENHANCED SENSORS

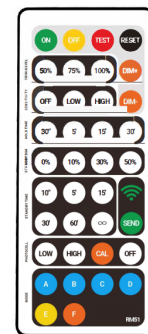
0-10V Dimming, DH, PIR, BLE 5.0 High Bay Sensor. 50FT. Maximum Height	JLS-LLE-EFS106-AUX
---	--------------------



JLS-LLE-FS106-AUX



JLS-LL-EFS07-AUX



JLS-LL-EFS07-AUX

Specifications are typical values and may change without notification

efficiency. illuminated.



## SENSOR READY ROUND HIGH BAY

JAYKAL

### MOUNTING ACCESSORIES

DESCRIPTION	MODEL NUMBER
Ring (Included with Fixture)	JLS-G4HB-RING
Pendant Mounting Kit	JLS-G4HB-S-PMK
Yoke Mount Bracket	JLS-G4HB-S-YMK
Wire Guards	JLS-G4HB-S-WG
PC Reflector	JLS-G4HB-S-PCR
Aluminum Reflector	JLS-G4HB-S-ALR
PC Reflector +Hoop+Spring Hook+cover	JLS-G4HB-S-PCHSC



Ring Included  
with Fixture



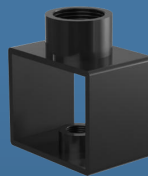
Yoke Mount  
Bracket



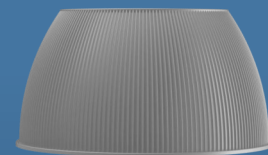
Metal Reflector  
Shade



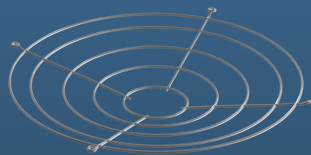
Stainless Steel  
Spring Hook



Pendant  
Mount Kit



Polycarbonate  
Reflector



Wire Guard

*Specifications are typical values and may change without notification*

**efficiency. illuminated.**