



## DL SERIES SPECIFICATION GRADE DOWNLIGHT

## JAYKAL

PROJECT NAME:

**JAYKAL LED SOLUTIONS, INC.**

[www.jaykal.net](http://www.jaykal.net)

21499 Baltimore Ave.

Georgetown, DE 19947

(P) 302-295-0015

(F) 302-295-0016

PROJECT NOTES:

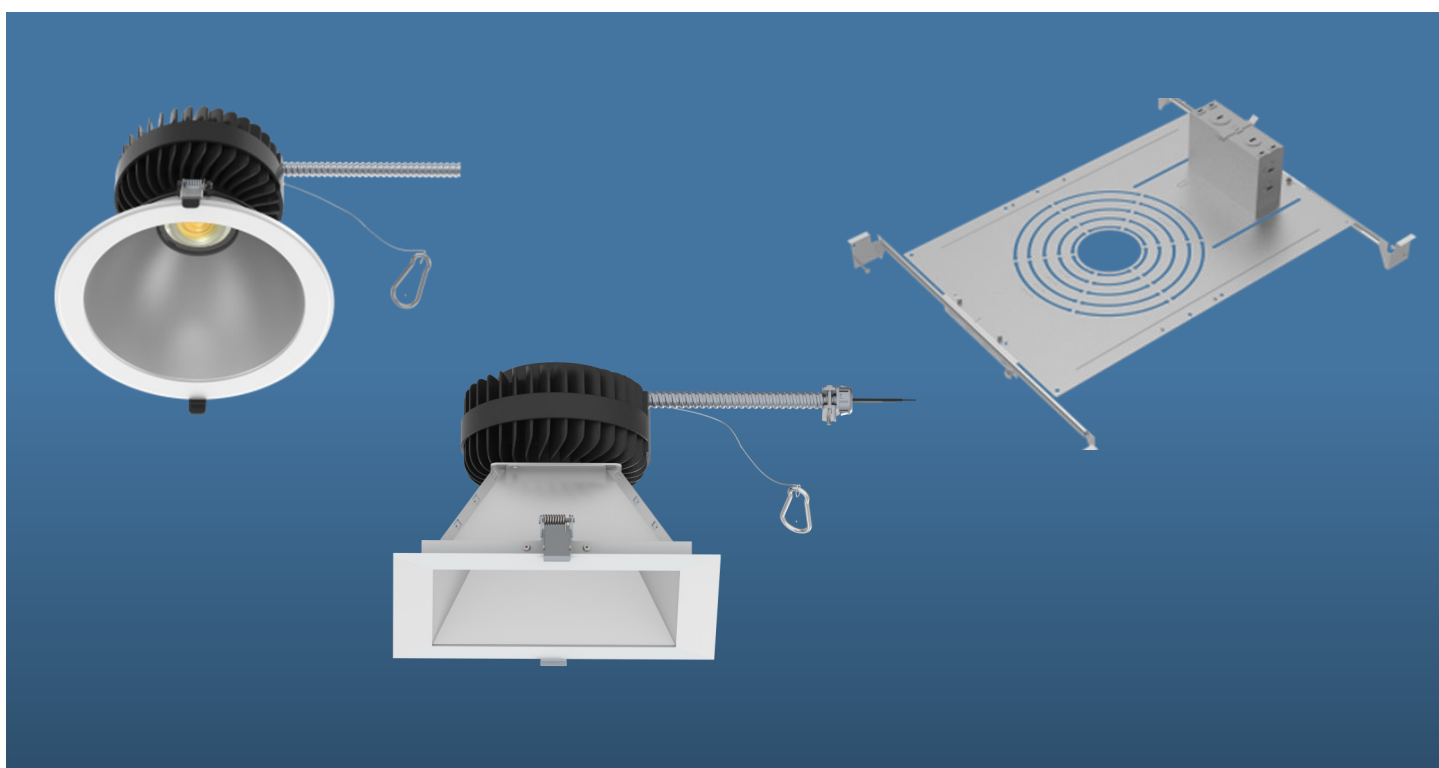
### PRODUCT DESCRIPTION

Jaykal's new specification grade downlight for new construction application with multiple options.

Wattage and color selectability is standard, allowing field tuning to meet changing project requirements. It features three wattage presets and five color presets and is Energy Star listed.

### FEATURES

- Wattage Selectable: From 6W to 56W
- CCT Selectable: 2700K/3000K/3500K/4000K/5000K
- M40 & M60 Light Engine options
- Round 4/6/8/10in and square 4/6/8 inch reflector
- Available for Multiple accessory options for new construction applications



**RoHS**   
Compliant



Revised 12/13/24

*Specifications are typical values and may change without notification*

**efficiency. illuminated.**



# DL SERIES SPECIFICATION GRADE DOWNLIGHT

**JAYKAL**

SPECIFICATIONS TABLE					
MODELS	JLS-DL				
INPUT VOLTAGE	120-277VAC 50/60hz / 120-347VAC 50/60Hz				
LIGHT ENGINE	M40				M60
WATTAGE TYPE	M1	M2	M3	M4	M5
WATTAGE	6W/8W/12W	8W/11W/18W	15W/20W/30W	20W/25W/36W	35W/45W/56W
EFFICACY	>83lm/W	>83lm/W	>86lm/W	>88lm/W	>89lm/W
LUMENS @50K	600/800/1,000lm	850/1,100/1,500lm	1,500/2,000/2,600lm	2,000/2,500/3,200lm	3,500/4,200/5,000lm
POWER FACTOR	>0.9				
DIMMING	Tri-mode 0-10V/TRIC/ELV dimming, 10-100%				0-10V dimming, 10-100%
THD	<20%				
CRI	90				
SURGE PROTECTION	2.5KV Ringwave				
NOISE	<22dB, ES class A, Title 24 standard				
SDCM	<7 Steps				
FLICKER	<30%				
CCT	MCCT (2700K/3000K/3500K/4000K/5000K Selectable)				
BEAM ANGLE	38-75 Degree	38-75 Degree	40-75 Degree	40-75 Degree	40-75 Degree
OPERATIONAL TEMP.	-25°C (-13°F) to 40°C (104°F)				
LENS	Polycarbonate				
HOUSING MATERIAL	Die-casting aluminum				
FINISH	Module: Sandy Black				
REFLECTOR SUITABLE FOR	4/6/8/10 Inch Reflector				6/8/10 Inch Reflector
REFLECTOR FINISH	Specular/Semi-specular/Matt White/Matt Black/Specular with white trim/Semi-specular with white trim				
IC OR NON-IC	IC Rated		Non-IC Rated		
OPERATIONAL TEMP.	-25°C (-13°F) to 40°C (104°F)				
L70 HOURS	>50,000Hrs L70 base on TM21				
ACCESSORIES	Goof Ring, New construction plat, Hanger bar, J-BOX or EMBB				
PACKAGE STYLE	Carton box & master carton box				
QTY/MASTER BOX	6 PCS				
DIMENSION	D4.35*H3.25"				D5.55*H3.25"
MASTER CARTON DIMENSION	L17.8*W16.6*H11.2"				L19.0*W18.2*H11.2"
IP RATING	IP44				
UL RATING	Suitable for Indoor Wet Locations				
APPLICATION	Interior Areas with Shower Rating				
WARRANTY	5 Years				

*Specifications are typical values and may change without notification*

**efficiency. illuminated.**



## DL SERIES SPECIFICATION GRADE DOWNLIGHT

JAYKAL

### COMPATIBLE DIMMER LIST

NO.	BRAND	MODEL NUMBER	INTERFACE
1	Leviton	IP710-DLZ	0-10V Dim
2	Lithonia/Synergy	ISD BC 120-277 WH	0-10V Dim
3	Cooper	SF10P-W	0-10V Dim
4	Lutron	DVSTV-WH	0-10V Dim
5	HUBBELL	PSD710	0-10V Dim
6	HUBBELL	RSD710Z	0-10V Dim

BRAND	MODEL NUMBER	WATTAGE	INTERFACE
Lutron	CTCL-153P-WH	150W	Triac Dim
Lutron	DVCL-153P	150W	Triac Dim
Legrand	HCL453PTCCCV6	450W	Triac Dim
Synergy/Leviton	ISD 600 I 120/IPI06	600W	Triac Dim
Leviton	6633-PA	600W	Triac Dim
Leviton	6631-PLW	600W	Triac Dim
Lutron	DVELV-300P-AL	300W	ELV Dim
Lutron	NTELV-300-WH	300W	ELV Dim
HUBBELL	RSDE06	600W	ELV Dim
Lutron	PD-5NE	150W	Wireless

*Specifications are typical values and may change without notification*

**efficiency. illuminated.**



# DL SERIES SPECIFICATION GRADE DOWNLIGHT

JAYKAL

## REFLECTOR OPTIONS



Specular



Semi-Specular



Matt White



Matt Black

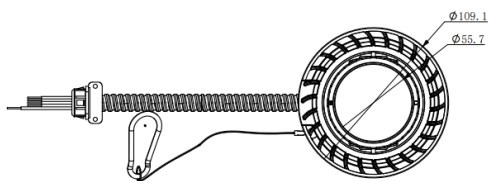


Specular with white trim

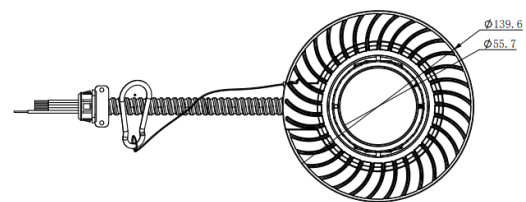


Semi-Specular with white trim

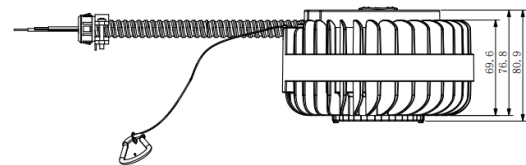
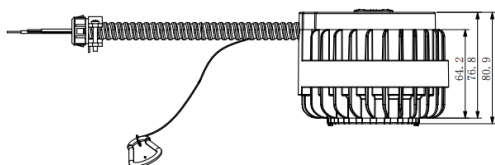
## DIMENSIONS (Units : mm)



M40 of Light Engine



M60 of Light Engine



Specifications are typical values and may change without notification

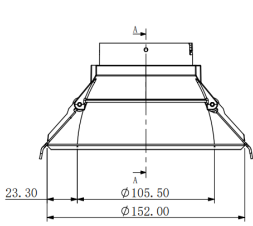
efficiency. illuminated.



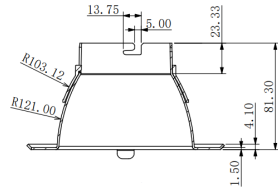
# DL SERIES SPECIFICATION GRADE DOWNLIGHT

# JAYKAL

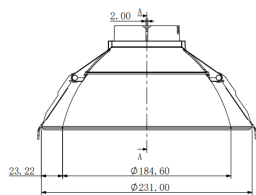
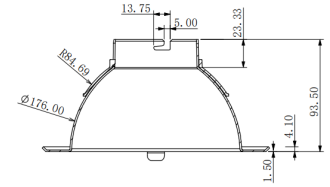
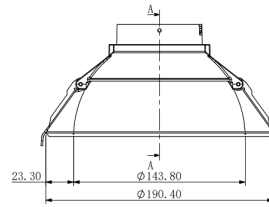
## DIMENSIONS (Units : mm/inch)



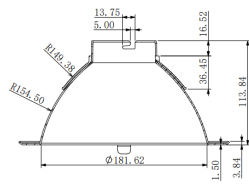
4inch Round



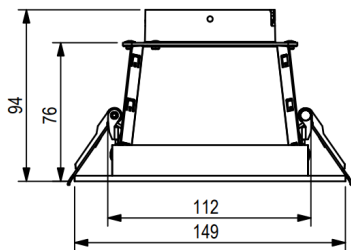
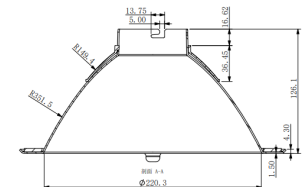
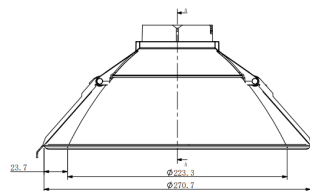
6inch Round



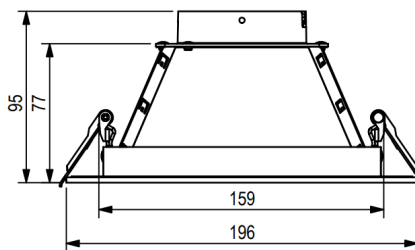
8inch Round



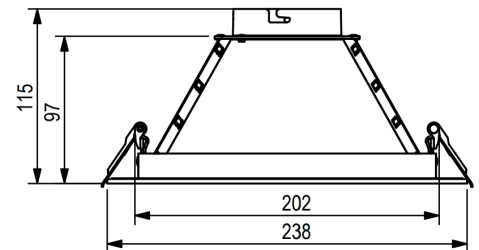
10inch Round



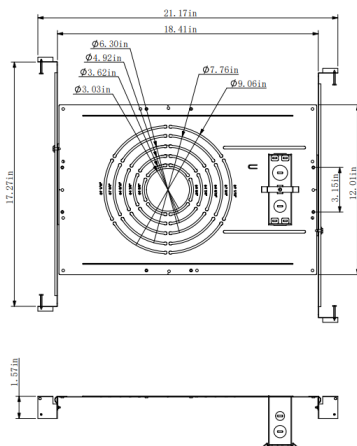
4inch Square



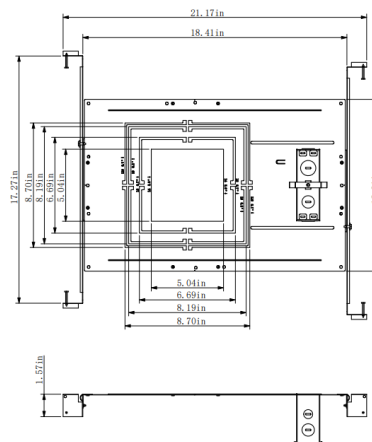
6inch Square



8inch Square



Round type of new construction plate



Square type of new construction plate

Specifications are typical values and may change without notification

efficiency. illuminated.



## DL SERIES SPECIFICATION GRADE DOWNLIGHT

**JAYKAL**

### Ordering Guide **TAA IS NOT AVAILABLE FOR THIS PRODUCT**

MODEL	LIGHT ENGINE	WATTAGE	REFLECTOR	APPERANCE OF HOUSING
JLS-DL	4 = M40	M1 = 6W/8W/12W M2 = 8W/11W/18W M3 = 15W/20W/30W M4 = 20W/25W/36W	R04 = Round 4" R06 = Round 6" R08 = Round 8" R10 = Round 4" S04 = Square 4" S06 = Square 6" S08 = Square 8"	S = Specular SS = Semi-Specular MM = Matt White MB = Matt Black SMW = Specular, Matt white Flange SSMW = Semi-Specular, Matt White Flange
	6 = M60	M5 = 35W/45W/56W		

### Accessories (SOLD SEPARATELY)

	Goof Ring for round housing	JLS-DL-GF-4/6/8
	3/4/6/8/10in Round New Construction Pans (Universal)	JLS-DL-NCPR
	4/6/8/10in Square New Construction Pans (Universal)	JLS-DL-NCPS
	3/4/6/8in New Construction Pans	JLS-DL-NCP-3/4/6/8
	Junction-Box	JLS-DL-B
	T-Grid Bar/ Hanger Bar	JLS-DL-HB
	New Construction Plate Kits	JLS-DL-NCPK

*Specifications are typical values and may change without notification*



**efficiency. illuminated.**



## DL SERIES SPECIFICATION GRADE DOWNLIGHT

JAYKAL

### Accessories (SOLD SEPARATELY)

EM Backups		
	8W Emergency Backup	EMBAC8-347V(BLD-HM08D)
	15W Emergency Backup	EMBBAC15-347V(BLD-HM15D)

*Specifications are typical values and may change without notification*

**efficiency. illuminated.**