



G4 Troffer Retrofit Door Kits

JAYKAL

PROJECT NAME:

JAYKAL LED SOLUTIONS, INC.

www.jaykal.net

21499 Baltimore Ave.

Georgetown, DE 19947

(P) 302-295-0015

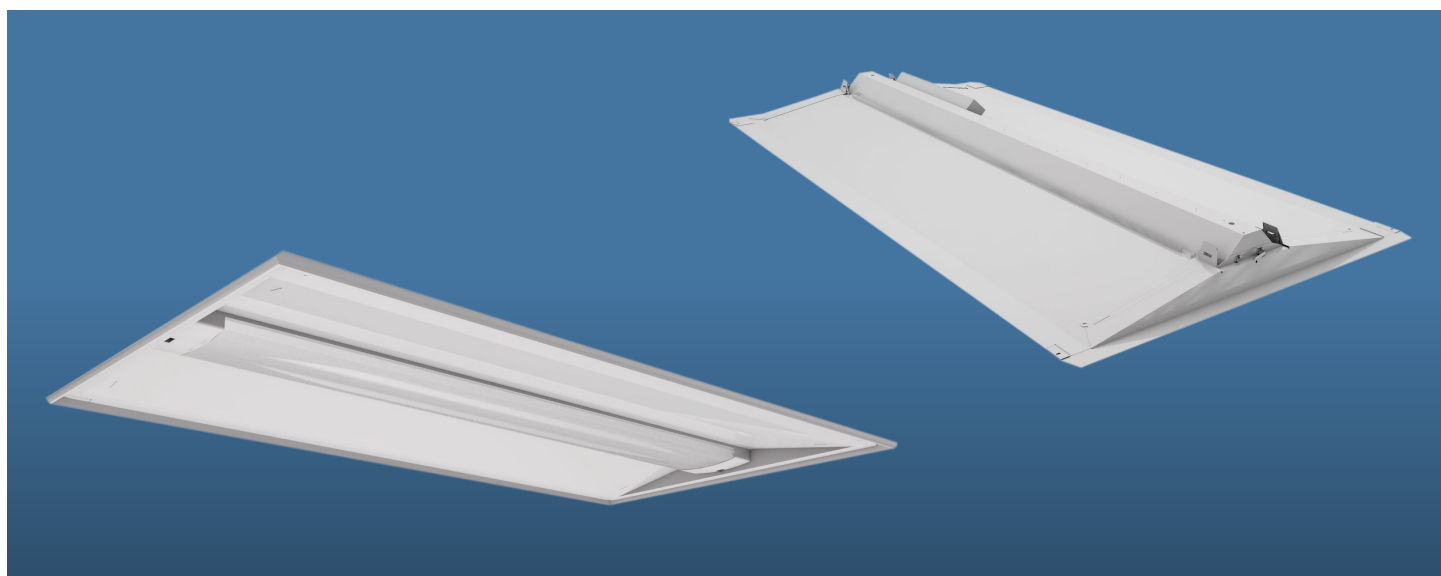
PROJECT NOTES:

PRODUCT DESCRIPTION

This product emphasizes advanced control options, including occupancy sensing and IoT capabilities, making it suitable for modern, automated building environments. The dual CCT option offers versatility in lighting preferences, and the compliance options ensure it meets specific regulatory requirements. The extended warranty availability and emergency driver option highlight its reliability and suitability for critical applications.

FEATURES

- 6 Preset Vari-Watt Driver Standard ☑
- Vari-Watt EM Driver Option ☑
- CCT Options: 3000K/3500K/4000K/5000K ☑
- Dual CCT Option
- 5 Year Standard Warranty,
- 10 Year Available
- Multiple Occupancy/Bi-Level Dimming Control Options



RoHS 
Compliant

Revised 12/6/24

Specifications are typical values and may change without notification

efficiency. illuminated.



G4 Troffer Retrofit Door Kits

JAYKAL

SPECIFICATIONS TABLE

VW DRIVER	M1						M2						M3					
VW PRESETS	7W	9W	10W	11W	12W	15W	18W	20W	22W	24W	27W	30W	33W	36W	40W	44W	50W	55W
HE (150LM/W)	1,050	1,350	1,500	1,650	1,800	2,250	2,700	3,000	3,300	3,600	4,050	4,500	4,950	5,400	6,000	6,600	7,500	8,250
SE (135LM/W)	945	1,215	1,350	1,485	1,620	2,025	2,430	2,700	2,970	3,240	3,645	4,050	4,455	4,860	5,400	5,940	6,750	7,425
INPUT VOLTAGE	120-277VAC 50/60hz																	
EFFICACY	≈135lm/W (Standard Efficiency) or ≈150lm/W (High Efficiency)																	
PF	>0.95 @ 120V - 277V 60Hz																	
THD	<20%																	
UGR	<22																	
CRI	>80																	
L70 HOURS	113,000 Hours																	
CCT	3000K/3500K/4000K/5000K Dual CCT (3000K/4000K) or Dual CCT (3500K /4000K)																	
BEAM ANGLE	120°																	
OP. TEMP.	(-25°C to 40°C)																	
IP RATING	IP44																	
ENVIRONMENT	Indoor / Damp																	
LENS	Frosted Polycarbonate																	
CONSTRUCTION	Sheet Metal																	
FCC COMPLIANCE	FCC 47, CFR Part 18																	
WARRANTY	5 Year Standard Warranty with 10 Year Option																	

ORDERING GUIDE

EXAMPLE: JLS-24G4TRF-840K-M2-N-10-S-S-SE-R

MODEL	SIZE	CCT	WATTAGE	SENSORS	DIMMING	FLICKER	PLENUM	EFFICACY	TYPE
JLS	14G4TRF 22G4TRF 24G4TRF	830K = 3000K 835K = 3500K 840K = 4000K 850K = 5000K 8MCCT = Dual CCT 30K/40K 8MCCT = Dual CCT 35K/40K	Vari-Watt M1 = (7W/9W/10W/11W/12W/15W) M2 = (18W/20W/22W/24W/27W/30W) M3 = (33W/36W/40W/44W/50W/55W)* Vari-Watt (EMVW) EM1 = (10W/14W/18W/22W) EM2 = (15W/22W/27W/33W) EM3 = (24W/30W/36W/40W) EM4 = (38W/43W/48W/55W)* * 24G4TRF Only	N = None OC = Occupancy Sensor BL = Occupancy Bi-Level Dimming BLG = Bi-Level/ Day Light Harvesting/Grouping BTG = Blue Tooth Mesh /Day Light Harvesting/Grouping/ Dimming BTN = Blue Tooth Mesh Node BLD = Bi-Level/ Day Light Harvesting/Dual mode (PIR + Microwave) EN = Enlighted Sensor EZ = EasySense	10 = 0-10V 50 = Bi-Level	S = Standard FF = Flicker Free	S = No PL = Plenum	SE = Standard HE = High	R = Retrofit



Not all product variations listed on this page are DLC qualified. Visit the [DLC website](#) to confirm qualification.

Contact Jaykal for additional product approval.

Specifications are typical values and may change without notification

efficiency. illuminated.



G4 Troffer Retrofit Door Kits

JAYKAL

CONTROL OPTIONS

Option BL: Occupancy Sensor with Bi-Level Dimming & One Key Commissioning

- ◆ Adjustable Detection Area
- ◆ Task Lighting/ Lumen Maintenance
- ◆ Ambient Light Sensing
- ◆ High Frequency Motion Sensing
- ◆ One-Key Commissioning - Save the settings for the fixture and program each additional fixture with One-Key Press.
- ◆ Hidden Installation with LED/Daylight Spectrum Recognition

Option BLG: Occupancy Sensor with Bi-Level Dimming, Grouping and One-Key Commissioning

- ◆ Adjustable Detection Area
- ◆ Task Lighting/ Lumen Maintenance
- ◆ Ambient Light Sensing
- ◆ High Frequency Motion Sensing
- ◆ One-Key Commissioning with Wireless Remote
- ◆ Hidden Installation with LED/Daylight Spectrum Recognition
- ◆ One-Key Commissioning - Save the settings for the fixture and program each additional fixture with One-Key Press.
- ◆ RF Wireless Grouping of up to 30 Fixtures.

PRODUCT	LENGTH (in.)	WIDTH (in.)	DEPTH (in.)	WEIGHT (lbs.)
24G4TRF	47.75	23.75	2.36	5.85
22G4TRF	22.76	20.67	2	5.27
14G4TRF	47.75	11.75	3.21	8.64

Specifications are typical values and may change without notification

efficiency. illuminated.