

JLS-LLE-WPPA102-W SERIES LONG RANGE CONTROLLER NODE **JAYKAL**

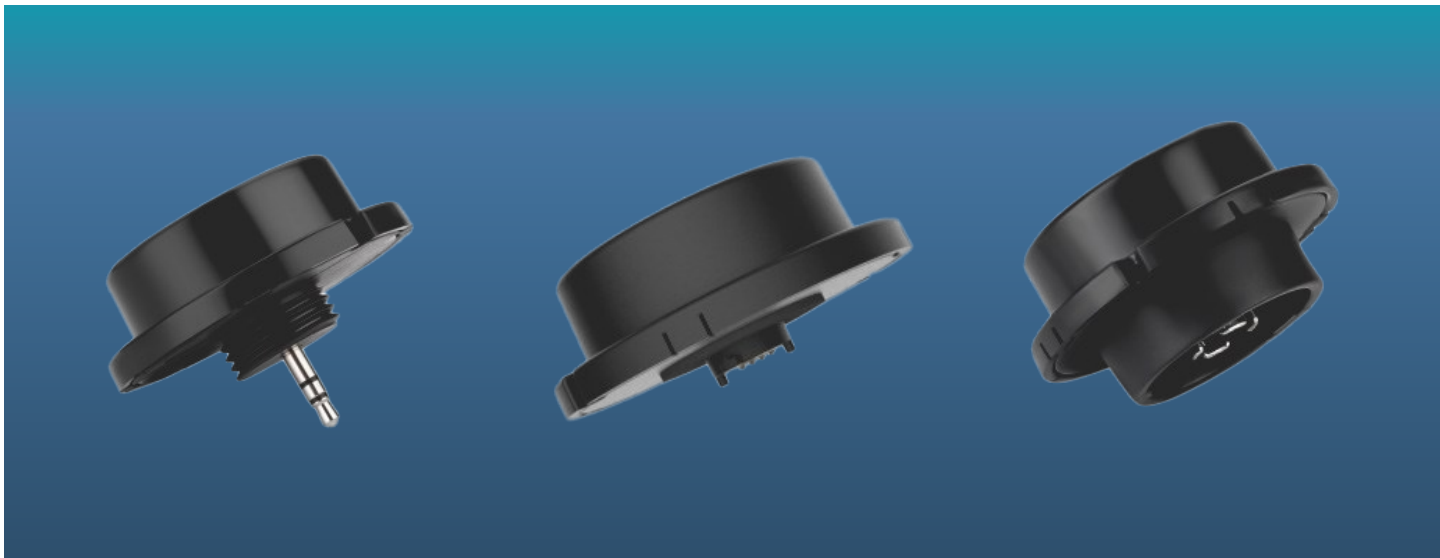
PROJECT NAME:	JAYKAL LED SOLUTIONS, INC. www.jaykal.net
PROJECT NOTES:	21499 Baltimore Ave. Georgetown, DE 19947 (P) 302-295-0015 (F) 302-295-0016

PRODUCT DESCRIPTION

The JLS-LLE-WPPA102-W is a Bluetooth control node designed for integration with wet-listed sensors. It features an enhanced antenna capable of transmitting signals up to 328 feet (100 meters), making it ideal for outdoor applications where extended distances between system nodes are required. The controller is housed in an IP66-rated enclosure, ensuring protection against dust and powerful water jets. The housing is constructed from UV-rated nylon material and finished in black to complement commercial outdoor luminaires. This robust design allows the JLS-LLE-WPPA102-W to withstand harsh outdoor environments while maintaining reliable wireless communication within the LumaLinx lighting control system.

FEATURES

- Magnetic reset: Factory settings restored by 3-second magnet proximity
- Wireless connectivity: Links to other Keilton+autani devices
- Environmental rating: IP66, suitable for wet locations
- Application: Designed for outdoor and wet location installations
- Housing: UV-rated nylon with black finish
- Antenna: Enhanced long-range capability
- Bluetooth transmission range: Up to 328 ft (100 m)



Revised 11/13/24

Specifications are typical values and may change without notification

efficiency. illuminated.



JLS-LLE-WPPA102-W SERIES LONG RANGE CONTROLLER NODE

JAYKAL

FEATURES

- Requires Dim-to-Off LED drivers with 12V AUX output
- Requires a mating receptacle, ex. JLS-LLE-WSC01-AUX, BH4W Z10 (by others), sold separately
- Magnet required to reset to factory settings

SPECIFICATIONS TABLE

JLS-LLE-WPPA102-W SERIES

INPUT VOLTAGE	12VDC
INPUT CURRENT	41mA Max
INPUT POWER	0.5W
OUTPUT CURRENT	10mA Max
OUTPUT POWER	0.1W
DIMMING	Class 2, 0-10V DC 10mA Max
SINKING CURRENT	10mA Max
BLUETOOTH TRANSMIT	328ft Max
RADIO FREQUENCY	2.4GHz ± 75MHz
BLUETOOTH VERSION	5.0
HOUSING MATERIAL	UL 94-5VA
INDOOR/OUTDOOR USE	Outdoor Use
OPERATING TEMPERATURE	-30°C to 65°C, -22°F to 149°F
STORAGE TEMPERATURE	-30°C to 85°C, -22°F to 185°F
IP RATING	IP66/Wet Location
COLOR	Black
WARRANTY	5 Years
COMPLIANCE	UL8750, UL1376, RoHS

Due to our continued efforts to improve our products, specifications are subject to change without notice.

Ordering Guide

MODEL	BASE	COLOR	BLUETOOTH VERSION	DESCRIPTION
JLS-LLE-WPPA102-BH4-W.B1	BH4	Black	5.0	Bluetooth Long-Range Controller Node
JLS-LLE-WPPA102-Z10-W.A0	Zhaga Z10	Black	5.0	
JLS-LLE-WPPA102-AUX-W.A0	AUX	Black	5.0	

Specifications are typical values and may change without notification

efficiency. illuminated.

JLS-LLE-WPPA102-W SERIES LONG RANGE CONTROLLER NODE JAYKAL



JLS-LLE-WSC01-AUX



JLS-LLE-BH4W

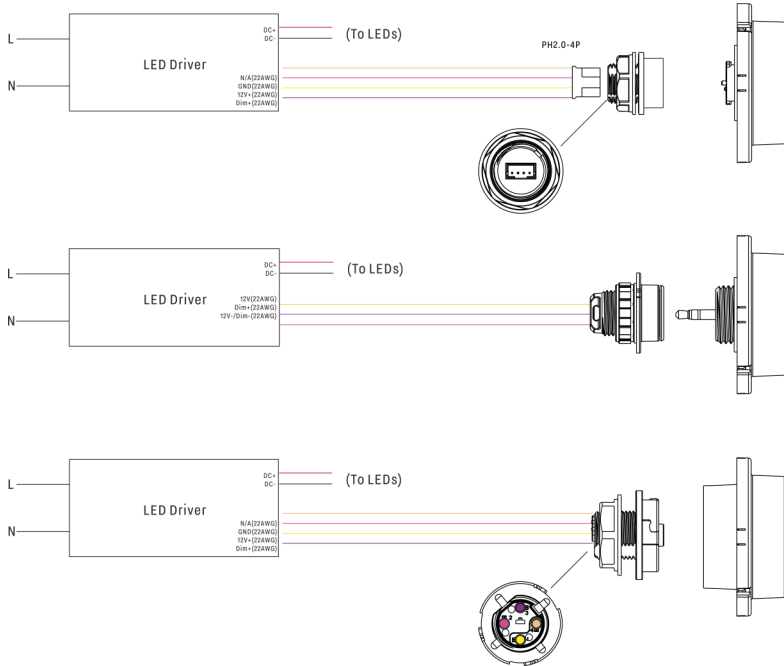


JLS-LLE-WSC03-AUX

Accessory Ordering Guide

MODEL	TYPE	DESCRIPTION
JLS-LLE-WSC01-AUX	Base	Wet Location AUX Receptacle
JLS-LLE-BH4W	Base	Wet Location BH4 Receptacle
JLS-LLE-WSC03-AUX	Accessory/Adapter	Wet Location AUX Socket Extension Adapter

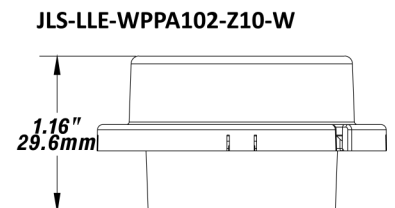
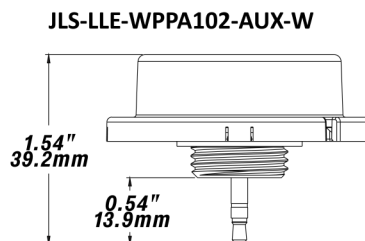
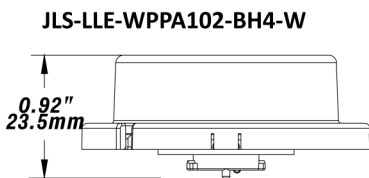
WIRING



Socket Mounting Dimensions		
Size	T.P.I - inch	Major Dia. - inch
R1/2	14	0.825

DIMENSIONS

Unit:inch/mm



Specifications are typical values and may change without notification

JLS-LLE-WPPA102-W SERIES LONG RANGE CONTROLLER NODE JAYKAL

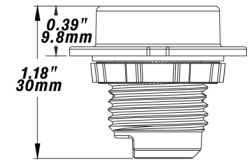
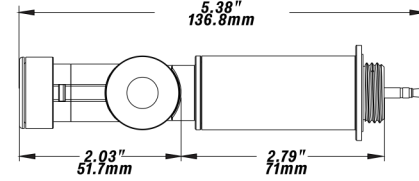
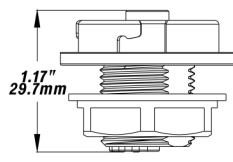
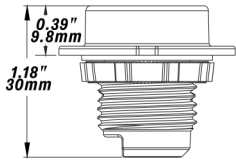
ACCESSORIES DIMENSIONS

JLS-LLE-WSC01-AUX

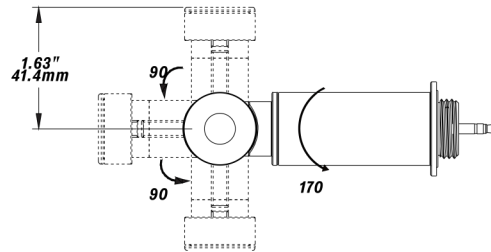
Zhaga Z10 (By Others)

JLS-LLE-WSC03-AUX

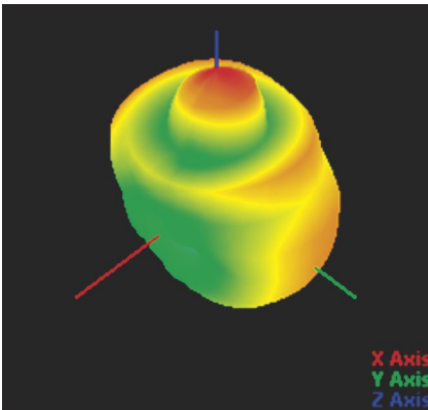
JLS-LLE-BH4W



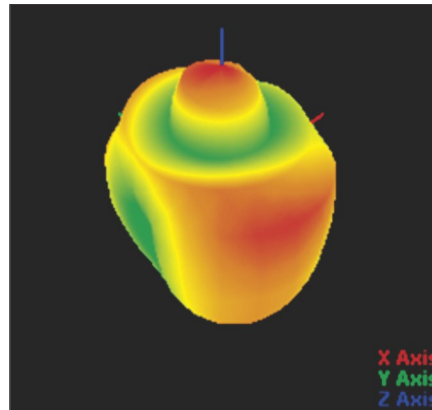
Socket Mounting Dimensions		1/2 inch US standard knockout
Size	T.P.I. - inch	Major Dia. - inch
R1/2	14	0.825



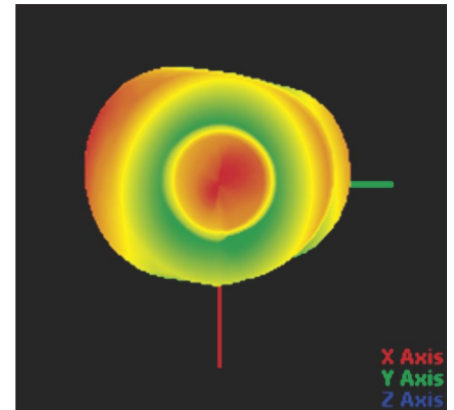
TRANSMISSION



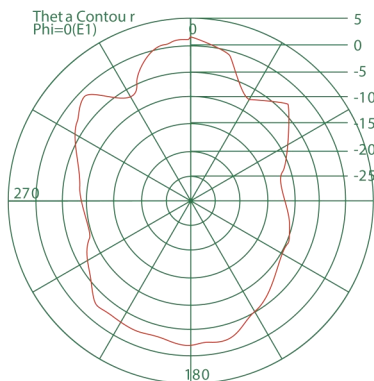
T45-P4 5T



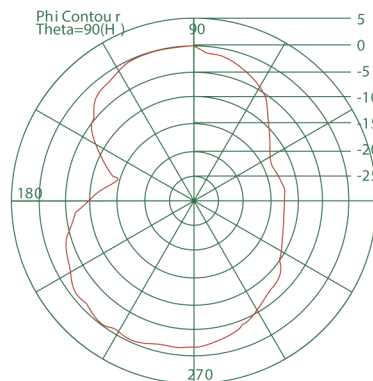
45-P22 5T



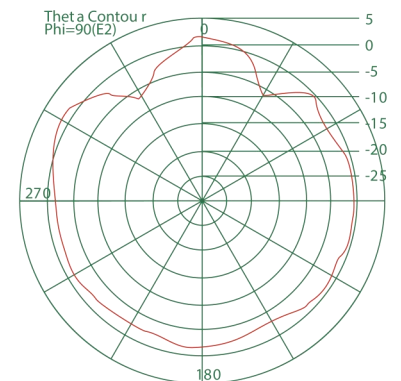
0-P0



XOZ



XOY



YOZ

Specifications are typical values and may change without notification

JLS-LLE-WPPA102-W SERIES LONG RANGE CONTROLLER NODE

JAYKAL

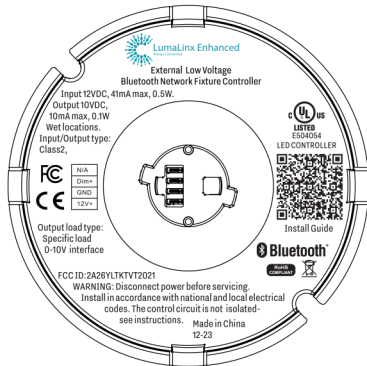
TRANSMISSION

Wireless Signal Strength

Transmission Distance	RSSI(dbm)
82ft(25m)	-76
164ft(50m)	-79
246ft(75m)	-87
328ft(100m)	-90

Note: The test transmission distance of two JLS-LLE-WPPA102-W

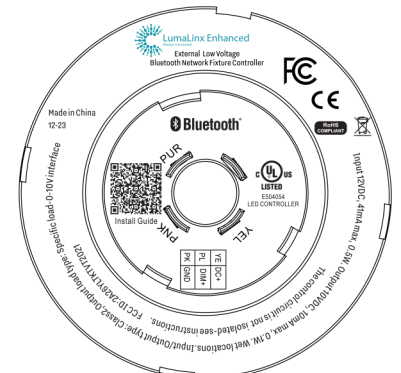
PRODUCT LABEL



WPPA102-BH4-W.B1



WPPA102-AUX-W.B1



WPPA102-Z10-W.B1

The Bluetooth word mark and logos are registered trademarks owned by Bluetooth SIG, Inc. and any use of such marks by LumaLinX is under license. Other trademarks and trade names are those of their respective owners.

APP DOWNLOAD



Specifications are typical values and may change without notification

efficiency. illuminated.