

JLS-LLE-EFS106-W SERIES LONG RANGE HIGH BAY SENSOR

JAYKAL

PROJECT NAME:

JAYKAL LED SOLUTIONS, INC.

www.jaykal.net

PROJECT NOTES:

21499 Baltimore Ave.

Georgetown, DE 19947

(P) 302-295-0015

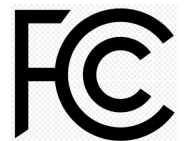
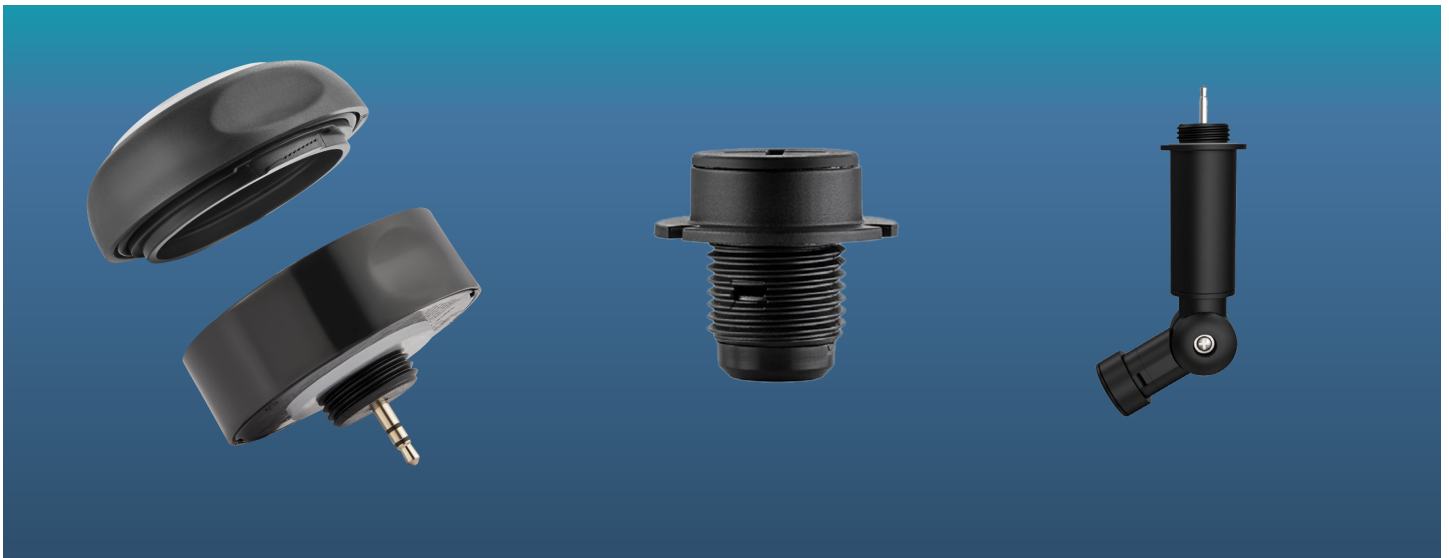
(F) 302-295-0016

PRODUCT DESCRIPTION

The JLS-LLE-EFS106-W series high bay sensors are ideal for Luminaire Level Lighting Control (LLLC) applications, especially for outdoor use. Featuring integrated daylight harvesting, passive infrared (PIR) motion sensors, integrated long-range antennas, and a UV-rated nylon housing with a black finish, the JLS-LLE-EFS106-W sensors are designed for plug and play installation in linear high bay or UFO high bay luminaires that have matching receptacles to accept one of the bases available with the sensors. These sensors are equipped with the **AlgoH²** algorithm to maximize accurate detection for high bay applications up to 40 feet, minimizing false triggers.

FEATURES

- Photocell+PIR sensing technology with **AlgoH²** algorithm to maximize detection for mounting up to 40 feet without false triggers
- Photocell for Hold ON/OFF operation
- Design enables color-tuning (WSC03-AUX Socket)
- WHBL1 series lens options (sold separately)
- IP66/Wet Location
- Ideal for Outdoor Use/Wet Location
- UV rated nylon housing (black finish housings)
- Black nylon or White polycarbonate available in select models
- Enhanced long range antenna, Bluetooth Transmit range: 328ft max



Revised 11/12/24

Specifications are typical values and may change without notification

efficiency. illuminated.

JLS-LLE-EFS106-W SERIES LONG RANGE HIGH BAY SENSOR

JAYKAL

SPECIFICATIONS TABLE

JLS-LLE-EFS106-W SERIES

INPUT VOLTAGE	12VDC
INPUT CURRENT	50mA Max.
INPUT POWER	0.6W
OUTPUT VOLTAGE	10VDC
OUTPUT CURRENT	10mA Max
OUTPUT POWER	0.1W
DIMMING	Class 2, 0-10VDC, 10mA Max
SINKING CURRENT	10mA Max
BLUETOOTH TRANSMIT	100ft Max
RADIO FREQUENCY	2.4GHz ± 75MHz
BLUETOOTH VERSION	4.2/5.0
HOUSING MATERIAL	UL 94-5VA
DETECTION RANGE	40-80ft
MOUNTING HEIGHT	20-40ft
INDOOR/OUTDOOR USE	Outdoor Use
OPERATING TEMPERATURE	-30°C to 55°C, -22°F to 131°F
STORAGE TEMPERATURE	-30°C to 85°C, -22°F to 185°F
IP RATING	IP40
COLOR	Black/White
WARRANTY	5 Years
COMPLIANCE	UL8750, RoHS
STANDARD INTERFACES	Zhaga book 18

Due to our continued efforts to improve our products, specifications are subject to change without notice.

Ordering Guide

MODEL	BASE	COLOR	PHOTOCELL TYPE	DESCRIPTION
JLS-LLE-EFS106-AUX-W	AUX	Black	Hold ON/OFF	High Bay Long Range Sensor
JLS-LLE-EFS106-AUX-W	AUX	White	Hold ON/OFF	High Bay Long Range Sensor

* Photocell provides On/Off operation per threshold settings. Does not daylight harvest

Specifications are typical values and may change without notification

efficiency. illuminated.

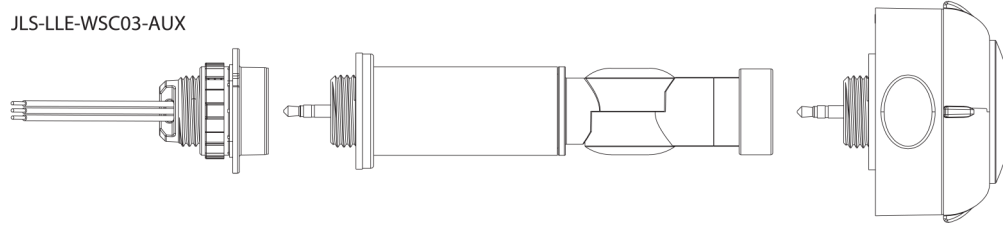
JLS-LLE-EFS106-W SERIES LONG RANGE HIGH BAY SENSOR

JAYKAL

WIRING



JLS-LLE-WSC03-AUX



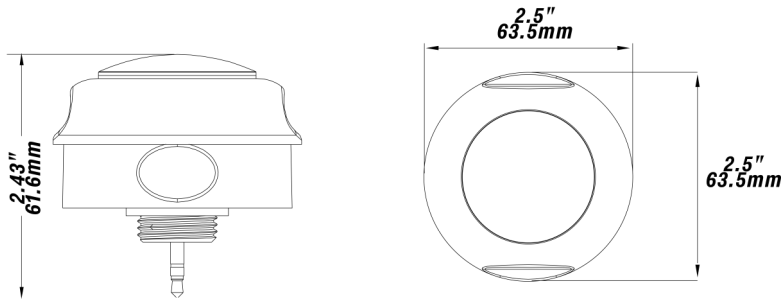
SOCKET MOUNTING DIMENSIONS

SIZE	AUX	MAJOR DIA. — INCH
R 1/2	14	0.825

DIMENSIONS

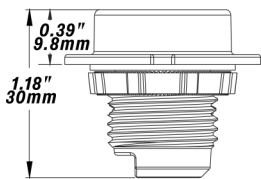
Unit: inch/mm

JLS-LLE-EFS106-AUX-W.B1

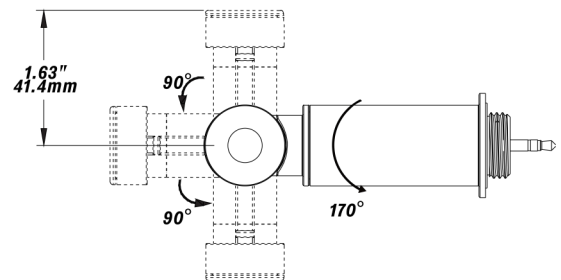
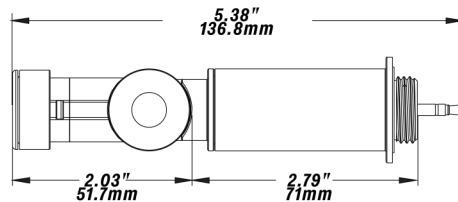


ACCESSORIES DIMENSIONS

JLS-LLE-WSC01-AUX



JLS-LLE-WSC03-AUX



SOCKET MOUNTING DIMENSIONS

SIZE	T.P.I —inch	MAJOR DIA. — INCH
R 1/2	14	0.825

Specifications are typical values and may change without notification

efficiency. illuminated.

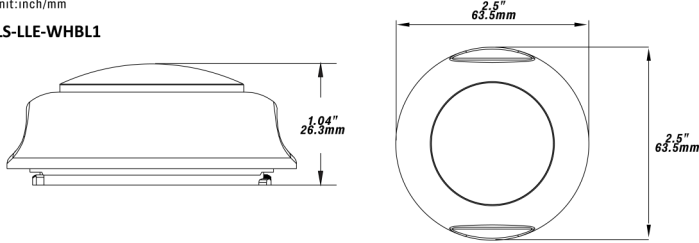
JLS-LLE-EFS106-W SERIES LONG RANGE HIGH BAY SENSOR

JAYKAL

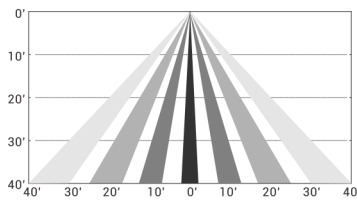
JLS-LLE-WHBL1 DIMENSIONS AND COVERAGE

Unit:inch/mm

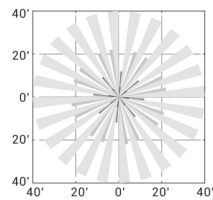
JLS-LLE-WHBL1



Coverage Side View



Coverage Top View



Height 40ft

WIRELESS SIGNAL STRENGTH

TRANSMISSION DISTANCE	RSSI(dbm)
82ft(25m)	-76
164ft(50m)	-79
246ft(75m)	-87
328ft(100m)	-90

PRODUCT LABEL



The Bluetooth word mark and logos are registered trademarks owned by Bluetooth SIG, Inc. and any use of such marks by LumaLinX is under license. Other trademarks and trade names are those of their respective owners.

APP DOWNLOAD



Specifications are typical values and may change without notification

efficiency. illuminated.