

## JLS-LLE-EFS104 SERIES

## JAYKAL

PROJECT NAME:

**JAYKAL LED SOLUTIONS, INC.**

[www.jaykal.net](http://www.jaykal.net)

PROJECT NOTES:

21499 Baltimore Ave.

Georgetown, DE 19947

(P) 302-295-0015

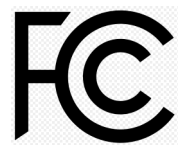
(F) 302-295-0016

### PRODUCT DESCRIPTION

The JLS-LLE-EFS104 High Bay PIR Sensor and Controller is compatible to other LumaLinX Devices which utilize Bluetooth technology for reliable and secure wireless communication. JLS-LLE-EFS104 is equipped with **AlgoH<sup>2</sup>** algorithm to enhance detection without false trigger.

### FEATURES

- Designed for High Bay applications
- **AlgoH<sup>2</sup>** algorithm enhance performance in high bay application
- PIR Sensor Built-in
- Replaceable lens options (not included)
- 120-277V Line Voltage input
- Daylight Harvesting
- Enhanced range antenna (JLS-LLE-EFS104.B1)



Revised 11/13/24

*Specifications are typical values and may change without notification*

**efficiency. illuminated.**

## JLS-LLE-EFS104 SERIES

**JAYKAL**

### SPECIFICATIONS TABLE

#### JLS-LLE-EFS104 SERIES

INPUT VOLTAGE	120-277VAC
OUTPUT CURRENT	JLS-LLE-EFS104.A0: 10A Max @ 120V, 10A Max @ 277V JLS-LLE-EFS104.B1: 6A Max @ 120V, 6A Max @ 277V
OUTPUT POWER	JLS-LLE-EFS104.A0: 1200W Max JLS-LLE-EFS104.B1: 720-1662W Max
DIMMING	Class 2, 0-10VDC, 10mA Max
SINKING CURRENT	10mA Max
BLUETOOTH TRANSMIT	200ft Max
RADIO FREQUENCY	2.4GHz ± 75MHz
BLUETOOTH VERSION	4.2 (JLS-LLE-EFS104.A0), 5.0 (JLS-LLE-EFS104.B1)
HOUSING MATERIAL	UL 94-5VA
DETECTION RANGE	40-80ft
MOUNTING HEIGHT	20-40ft
INDOOR/OUTDOOR USE	Indoor Use
OPERATING TEMPERATURE	-30°C to 55°C, -22°F to 131°F
STORAGE TEMPERATURE	-30°C to 85°C, -22°F to 185°F
IP RATING	IP40
COLOR	White
WARRANTY	5 Years
COMPLIANCE	UL8750, RoHS

Due to our continued efforts to improve our products, specifications are subject to change without notice.

## Ordering Guide

MODEL	DESCRIPTION
JLS-LLE-EFS104.A0	External Line Voltage High Bay Sensor (4.2 BLE)
JLS-LLE-EFS104.B1	External Line Voltage High Bay Sensor (5.0 BLE)

## Accessory Ordering Guide

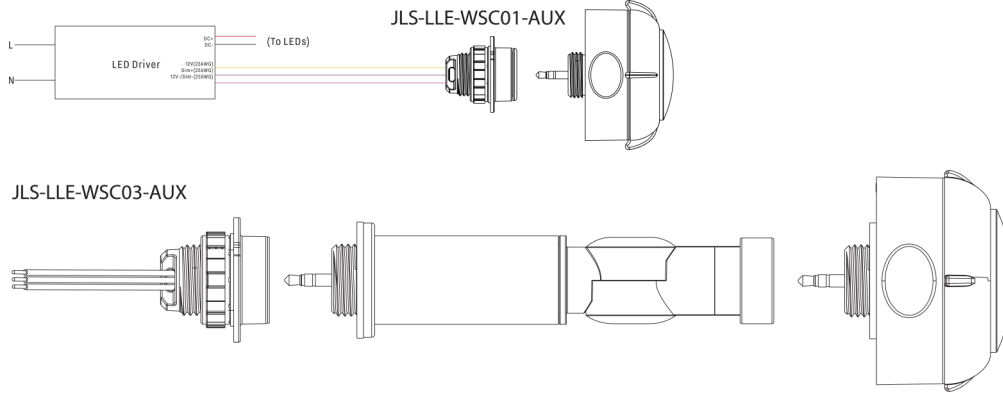
MODEL	TYPE	DESCRIPTION
JLS-LLE-HBL1-2	Lens	80' Diameter at 40' mounting
JLS-LLE-HBL3-2	Lens	80' Diameter at 40' mounting height
JLS-LLE-EJ30	Adapter	30mm Extension Adapter
JLS-LLE-EJ50	Adapter	50mm Extension Adapter

*Specifications are typical values and may change without notification*

**JLS-LLE-EFS104 SERIES**

**JAYKAL**

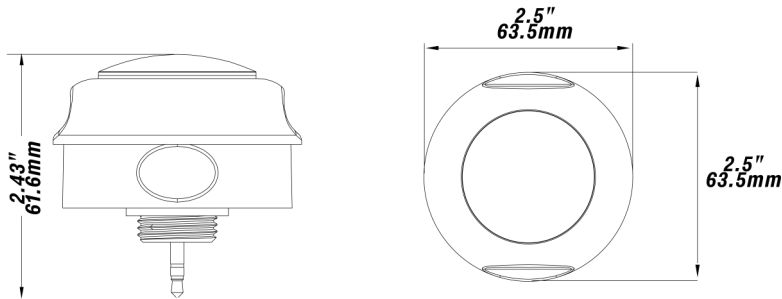
**WIRING**



**DIMENSIONS**

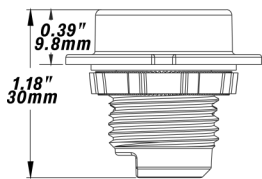
Unit: inch/mm

**JLS-LLE-EFS106-AUX-W.B1**

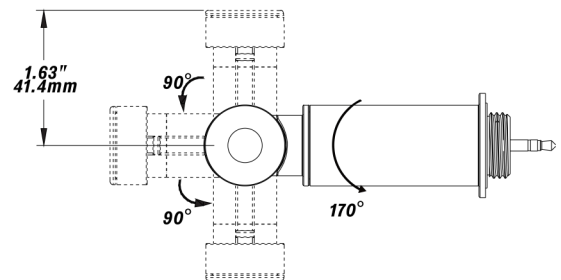
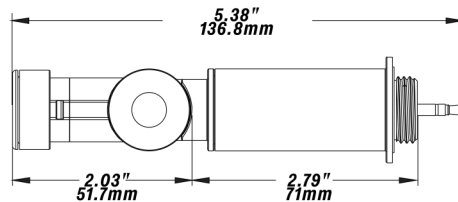


**ACCESSORIES DIMENSIONS**

**JLS-LLE-WSC01-AUX**



**JLS-LLE-WSC03-AUX**



**SOCKET MOUNTING DIMENSIONS**

SIZE	T.P.I –inch	MAJOR DIA. –INCH
R 1/2	14	0.825

*Specifications are typical values and may change without notification*

**efficiency. illuminated.**

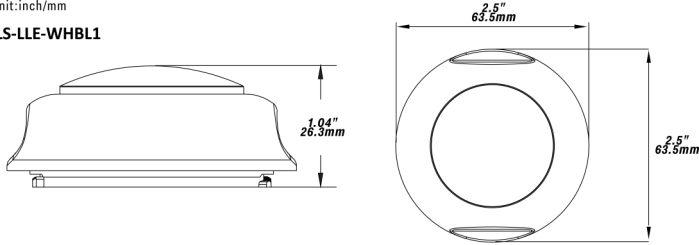
**JLS-LLE-EFS104 SERIES**

**JAYKAL**

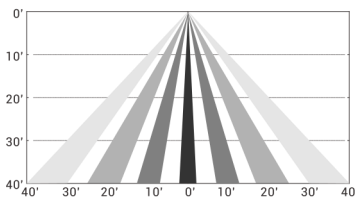
**JLS-LLE-WHBL1 DIMENSIONS AND COVERAGE**

Unit:inch/mm

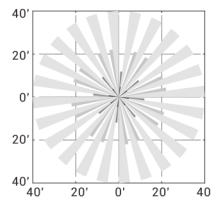
**JLS-LLE-WHBL1**



**Coverage Side View**



**Coverage Top View**



Height 40ft

**WIRELESS SIGNAL STRENGTH**

TRANSMISSION DISTANCE	RSSI(dbm)
82ft(25m)	-76
164ft(50m)	-79
246ft(75m)	-87
328ft(100m)	-90

**PRODUCT LABEL**



The Bluetooth word mark and logos are registered trademarks owned by Bluetooth SIG, Inc. and any use of such marks by LumaLinx is under license. Other trademarks and trade names are those of their respective owners.

**APP DOWNLOAD**



*Specifications are typical values and may change without notification*

**efficiency. illuminated.**