

JLS-LLE-IFS06R-AUX PANEL SENSOR

JAYKAL

PROJECT NAME:

JAYKAL LED SOLUTIONS, INC.

www.jaykal.net

PROJECT NOTES:

21499 Baltimore Ave.

Georgetown, DE 19947

(P) 302-295-0015

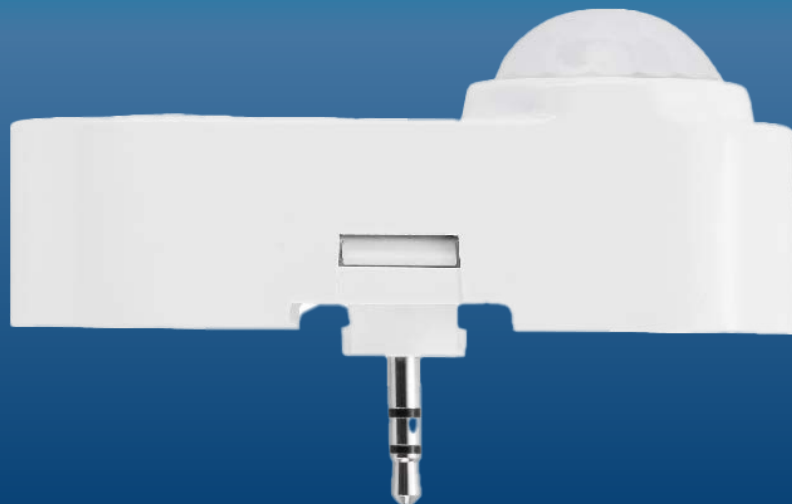
(F) 302-295-0016

PRODUCT DESCRIPTION

The JLS-LL-IFS06R-AUX is a PIR sensor with an integrated photocell and 2.5mm male audio connector, enabling easy plug-and-play integration for Luminaire Level Lighting Control (LLLC). A compact oval-shaped design allows the JLS-LL-IFS06R-AUX to fit in various styles of luminaires.

FEATURES

- Suitable for low profile luminaires
- Easy plug-and-play integration for Luminaire Level Lighting Control (LLLC)
- Operates on 12V DC supplied by a 0-10V dim-to-off LED driver
- Selectable modes for various applications via the RM51 remote controller
- Integrated photocell enables dusk-to-dawn operation independent of motion detection
- Auto-calibrates in Daylight Harvesting mode to reach target illumination by measuring combined natural and electric light



Revised 11/21/24

Specifications are typical values and may change without notification

efficiency. illuminated.

JLS-LLE-IFS06R-AUX PANEL SENSOR

JAYKAL

SPECIFICATIONS TABLE

JLS-LL-IFS08ET

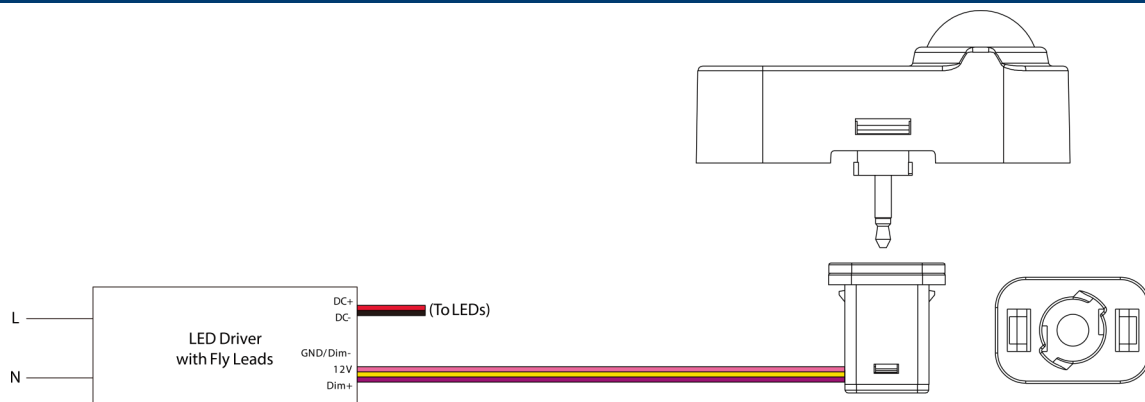
INPUT VOLTAGE	12VDC ±1V
INPUT CURRENT	9mA Max
INPUT POWER	<0.1W
SINKING CURRENT	≤10mA
DIMMING	Class 2, 0-10V DC 10mA Max
SINKING CURRENT	10mA Max
HOUSING MATERIAL	UL 94-5VA
INDOOR/OUTDOOR USE	Indoor Use Only
OPERATING TEMPERATURE	-30°C to 65°C, -22°F to 149°F
STORAGE TEMPERATURE	-30°C to 85°C, -22°F to 185F
IP RATING	IP20
COLOR	White
WARRANTY	5 Years
COMPLIANCE	UL8750, RoHS
SAFETY	cULus Listed E504054 Low Bay Sensor

Due to our continued efforts to improve our products, specifications are subject to change without notice.

Ordering Guide

MODEL	Description
JLS-LLE-IFS06R.A2	Panel Sensor-2.5mm Audio Jack Base
JLS-LL-SC05	Slim size audio jack receptacle for low bay application

WIRING



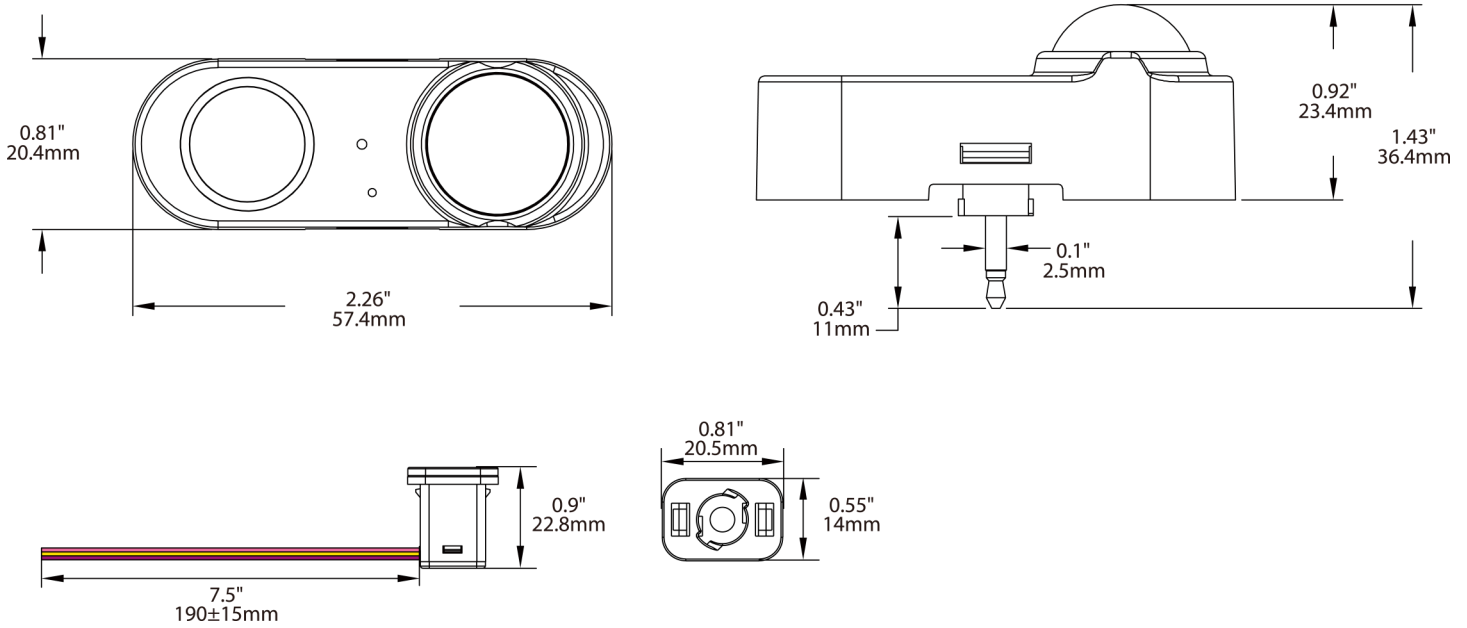
Specifications are typical values and may change without notification

JLS-LLE-IFS06R-AUX PANEL SENSOR

JAYKAL

DIMENSIONS

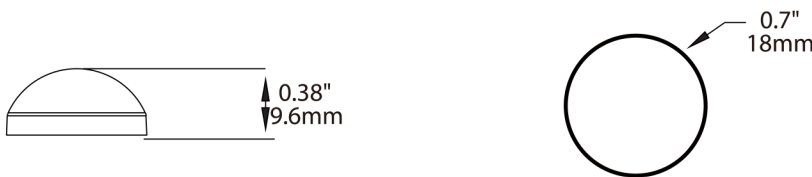
Unit:inch/mm



COVERAGE

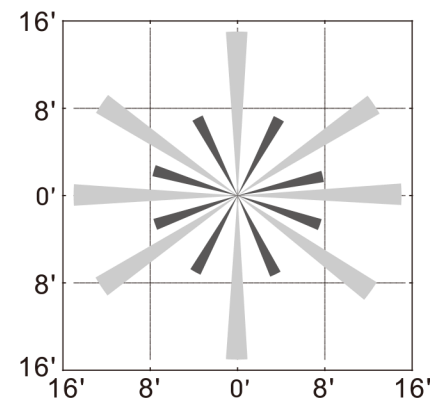
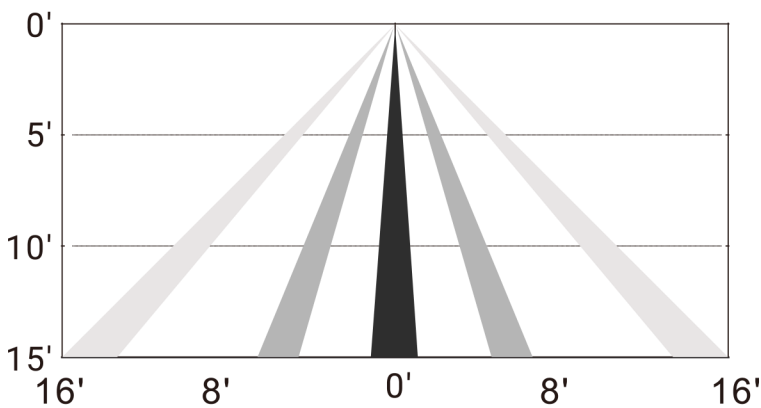
Unit:inch/mm

LBL2



Coverage Side View

Coverage Top View



Height 15ft

Specifications are typical values and may change without notification

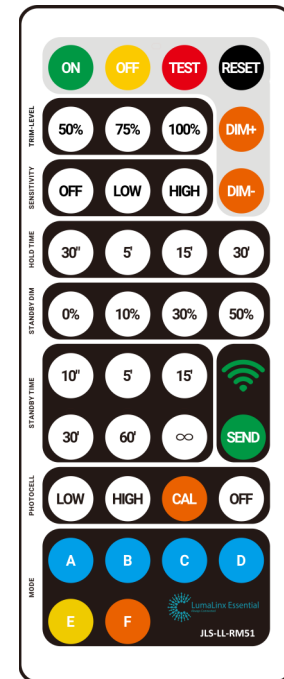
efficiency. illuminated.

JLS-LLE-IFS06R-AUX PANEL SENSOR

JAYKAL

REMOTE GUIDE

ON	Turns ON luminaires.
OFF	Turns OFF luminaires.
TEST	Test mode will last 5 minutes, then return to the previous setting. In test mode, the hold time is 2 seconds, SDL is 50% and the standby time is 2 seconds.
RESET	Trim-High = 100%, Sensitivity = High, T1 = 5 min, Standby Dim = 30% T2 = 60 min, Photocell = OFF.
DIM+/-	Remote will manually dim the luminaire up or down in increments of 0.5 volts. Smooth dimming should occur when holding the dimming button.
TRIM-LEVEL	Set maximum threshold value at 50% 75% or 100%.
SENSITIVITY	OFF (PIR OFF, Enter PC ON/OFF function) / LOW (50%) / HIGH (100%).
HOLDTIME	Time of no occupancy after which the fixture goes to standby: 30s / 5 min / 15 min / 30 min.
FMODE DAYLIGHT HARVESTING	(Enable/Disable) Measures and sets a feature to allow the fixture to maintain a light level when turned ON.
STANDBY DIM	Select any standby dim level: 0%/ 10%/ 30%/ 50%
STANDBY TIME	10s / 5 min / 15 min / 30 min / 1h / ∞. "∞" means the standby time is infinite, and the fixture is effectively controlled by the daylight sensor.
PHOTOCELL	LOW (1fc) / HIGH (50fc) / CAL (Collects the current Lux Level) ON.
MODE	Set settings to a program profile (A to F).
SEND	Send settings to the sensor.
DEFAULT MODE A	Trim-High = 100% Sensitivity = Low, T1 = 30 min, Standby Dim = 50% T2 = ∞, Photocell = CAL.
DEFAULT MODE B	Trim-High = 100% Sensitivity = Low, T1 = 30 min, Standby Dim = 50% T2 = 15 min, Photocell = CAL.
DEFAULT MODE C	Trim-High = 100% Sensitivity = Low, T1 = 30 min, Standby Dim = 50% T2 = 15 min, Photocell = OFF.
DEFAULT MODE D	Trim-Low = 50% Sensitivity = Low, T1 = 30 min, Standby Dim = 50% T2 = 30 min, Photocell = CAL.
DEFAULT MODE E	Manual Mode, Trim-High = 100%
DEFAULT MODE F	Daylight Harvesting, Trim-Low = 50% Sensitivity = Low, T1 = 15 min.



Specifications are typical values and may change without notification

efficiency. illuminated.