

Installation Instruction of EMVW Emergency Driver

IMPORTANT SAFEGUARDS

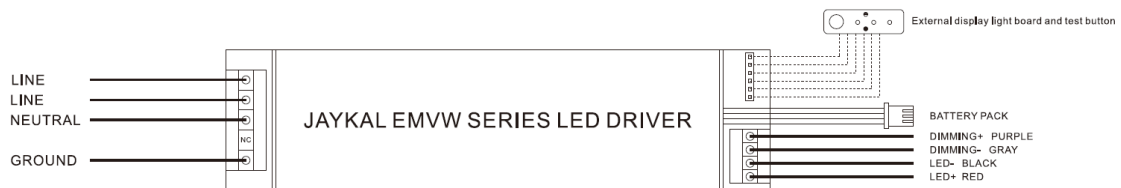
When using electrical equipment, basic safety precautions should always be followed including the following:

READ AND FOLLOW ALL SAFETY INSTRUCTIONS

- Do not use outdoors.
- Do not mount near gas or electric heaters.
- Equipment should be mounted in locations and at heights where it will not be subjected to tampering by unauthorized personnel.
- The use of accessory equipment not recommended by the manufacturer may cause an unsafe condition.
- Do not use this equipment for other than its intended use.

SAVE THESE INSTRUCTIONS

Wiring Diagram



Note :

The IC has risk if open circuit is exposure, it needs to be connected to the LED fixture before connecting battery.

Wiring sequence:

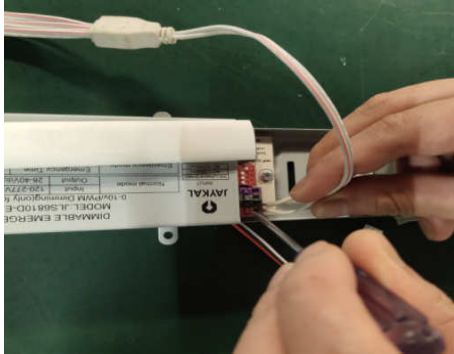
1. Connect to LED fixture
2. Connect the battery
3. Connect the AC wires
4. Power-on

Wire removal sequence:

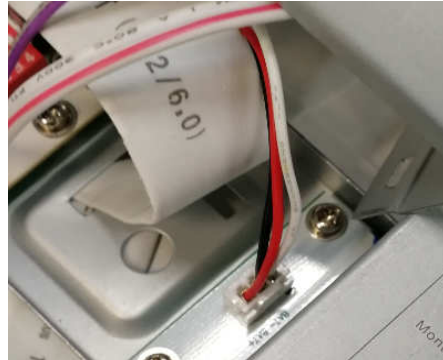
1. Power-off
2. Disconnect the AC wire
3. Disconnect the battery
4. Disconnect the LED fixture

Wiring sequence:

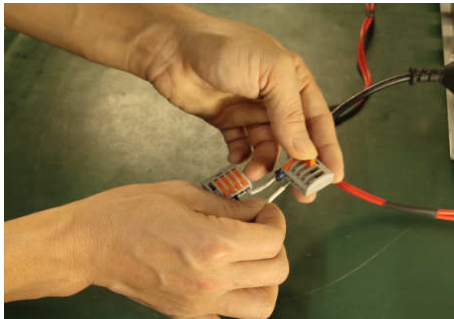
Step 1. Connect the LED board : Red and white wire connected to LED+; White wire connected to LED-



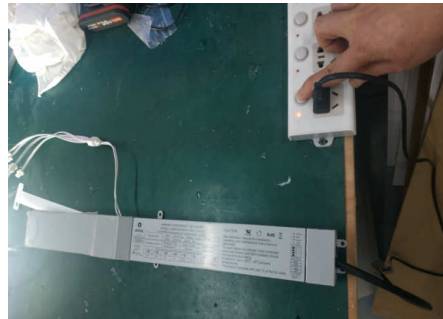
Step 2. Connect the battery :Connect the terminal wire of PCB to the battery, and then reinstall the wiring cover



Step 3. Connect the AC wires



Step 4. Power-on

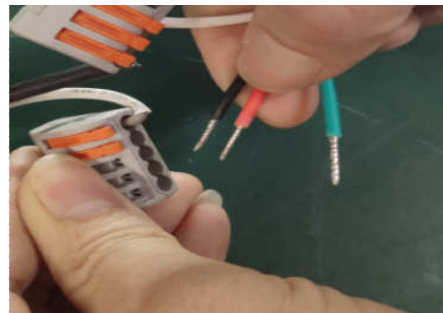


Wire removal sequence:

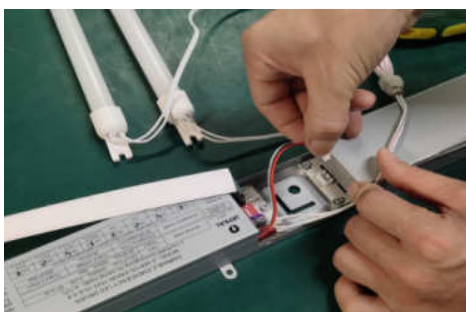
Step 1. Power-off



Step 2. Disconnect the AC wire



Step 3. Disconnect the battery



Step 4. Disconnect the LED board

