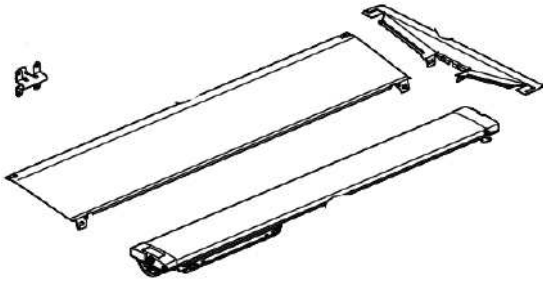
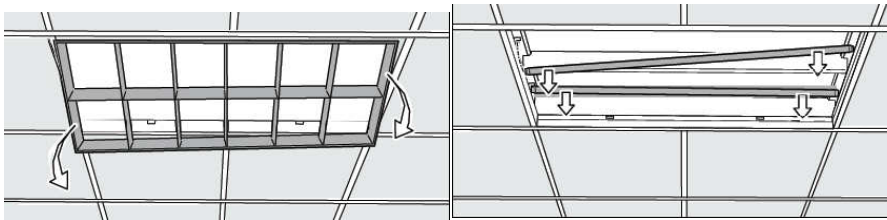


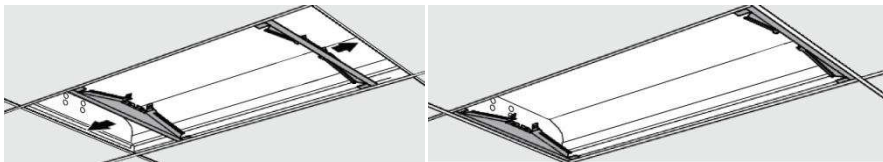
## Installation Instruction for G4 Troffer Retrofit Kit (For 2X2/2X4/1X4 size)



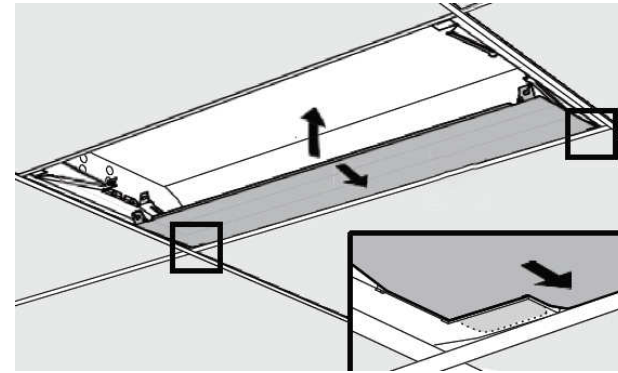
Set contains : 1 light Engine, 2 reflector panels, 2 end brackets, 4 fasteners



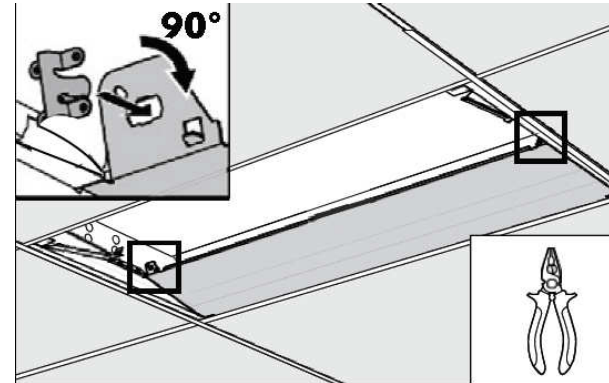
Step 1 : Turn power off , remove original cover from host fixture, remove Fluorescent tubes



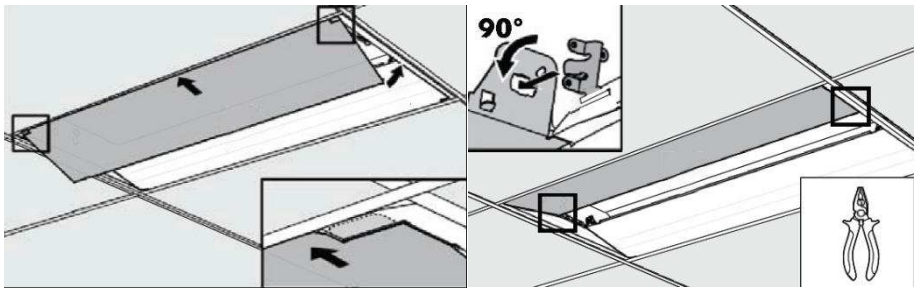
Step 2 : Install 2 End Bracket in-between fixture and T-grid, one inserted to left side, another inserted to right side



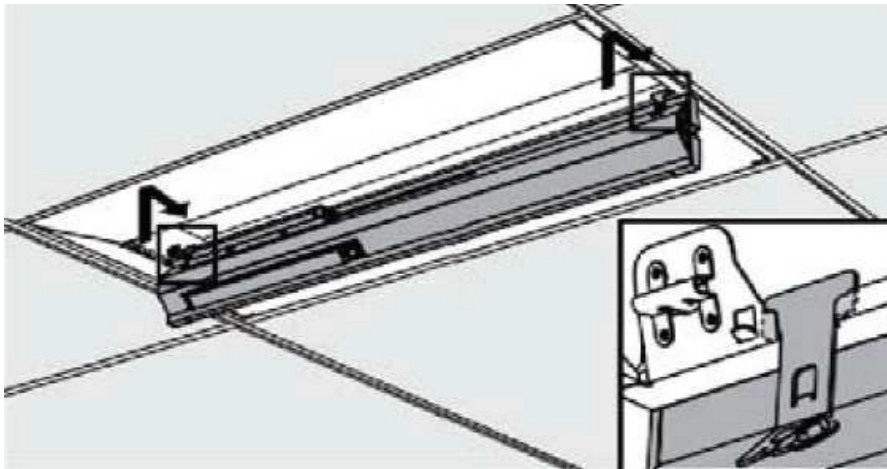
Step 3 : Install one of reflector panel in between fixture and T-grid, make sure the tabs at each corner of the reflector slide into the respective slots of the end bracket



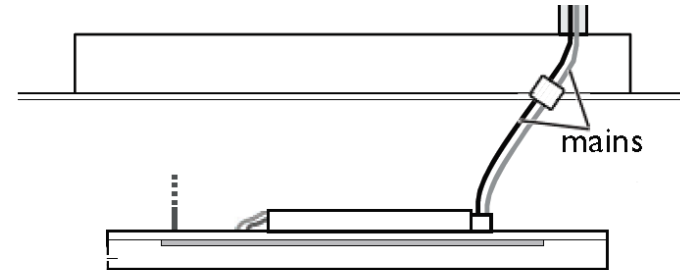
Step 4 : Push closing the two tabs of that reflector panel into the two tabs of two sides end bracket, use two fasteners to secure reflector panel with end brackets by turning the each fastener 90 degree



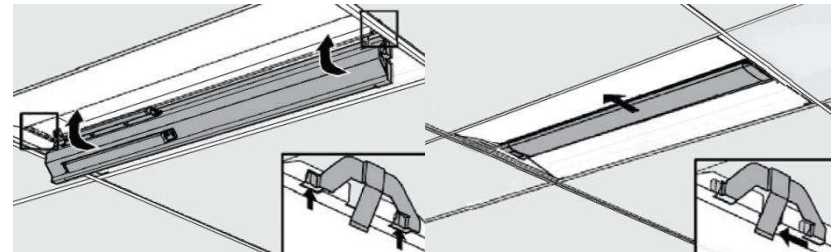
Step 5 : Install another part reflector panel and get secured similarly like step 3 & Step 4



Step 6 : Hand the light engine by getting the two tabs of light engine hooked and stuck into the two slots of reflector panel



Step 7 : Do the electrical connection between AC power supply and AC cable from light engine. Black wire from mains to black wire from light engine(L), white wire to white wire(N), green wire to green wire(G)



Step 8 : Rotate the light engine upwards and forward into position, making sure the tabs at each end of the light engine slide into the respective slots on the side panel.

Move light engine slightly until the springs at each end of the light engine click into position.