

# G4 LED troffer Retrofit Kit Installation Instruction

For Emergency type

## Installation Instruction

### Step 1

Cut off AC power supply switch, Prepare all parts of G4 troffer retrofits( include 1ea central light engine part, 2ea long side parts, 2ea end bracket parts, 1ea EM driver)



### Step 2

#### Install Emergency driver on original panel housing

Use self-tapping screw to lock EM driver on original housing where is on back of the position of one long side part, which means EM driver is behind of one of long side part



### Step 3

#### Install End bracket Part

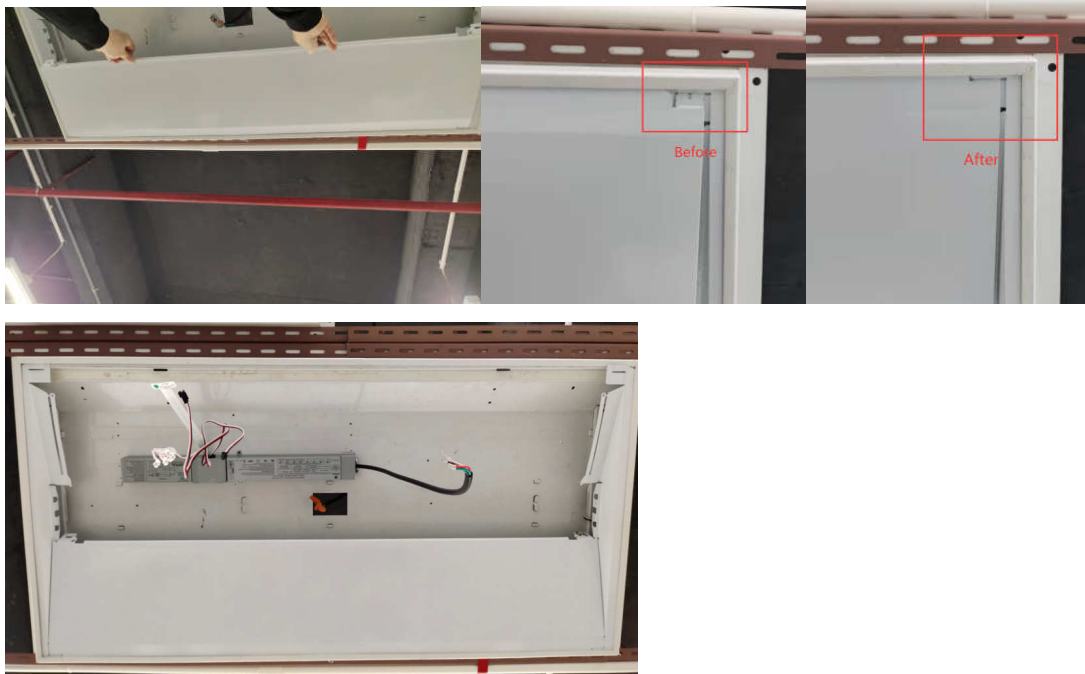
Insert 2ea end brackets under the original panel housing respectively



### Step 4

#### Install Long side part, include below 1) 2) 3) three small steps

1). Insert 1 of 2 long side parts under original troffer panel by locking with corner of 2ea end bracket parts first, install this long side part to where without EM driver



2). Use two twist latches to secure this long side part with two end bracket parts tightly.



3) Install another long side part to another side similarly where is sitting EM driver, to hide the EM driver but take out the wires from EM driver and show, including two plug wires and one indicated light wire



## Step 5

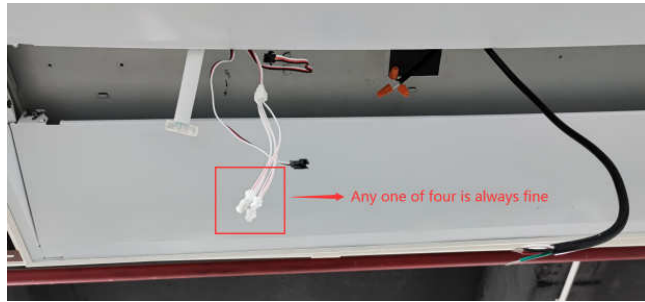
**Install central light engine part, include below 1) to 7) seven small steps**

1) Hang light engine part to one of long side parts by hanging the hook of light engine on the notch of long side part

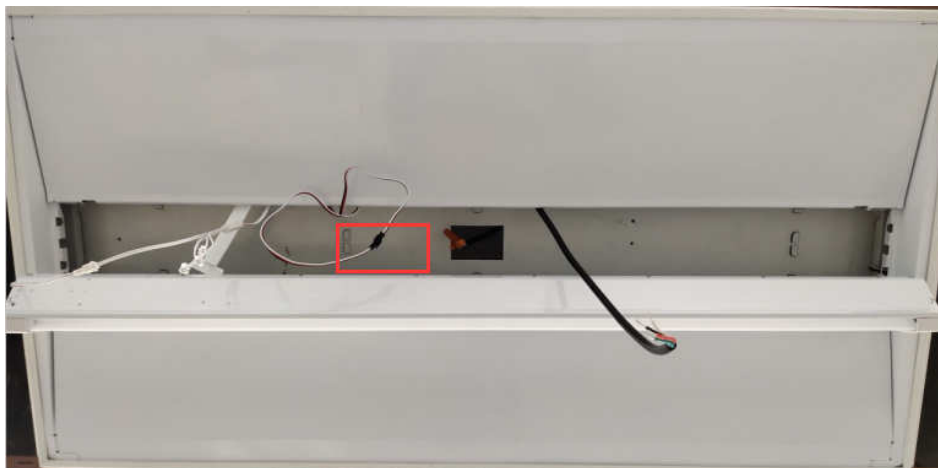


2) Do the wires connection, **PAY ATTENTION** that the wiring sequence is important, need to follow the wiring connection sequence as below strictly, can not reverse the sequence.

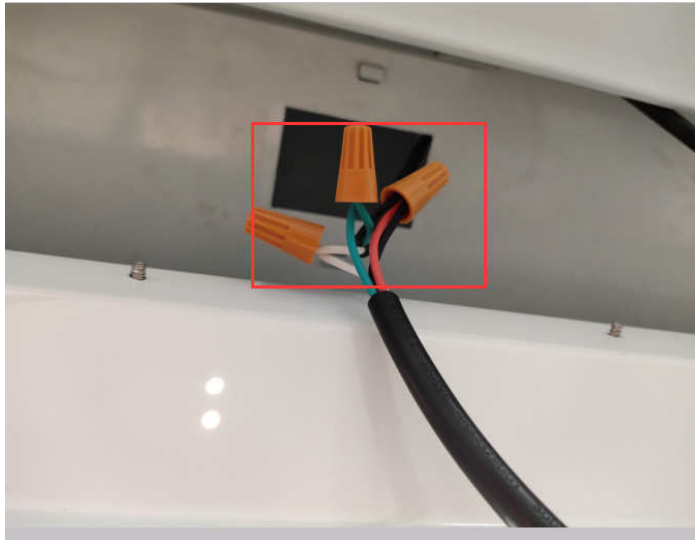
3) First connect wires from main light engine part and from EM driver DC output, two wires are both white color, plug connection way, female plug can be any one of four wires from EM driver



4) Second, connect two wires(cable) both from EM driver, they are male plug and female plug, they are white/red/black color



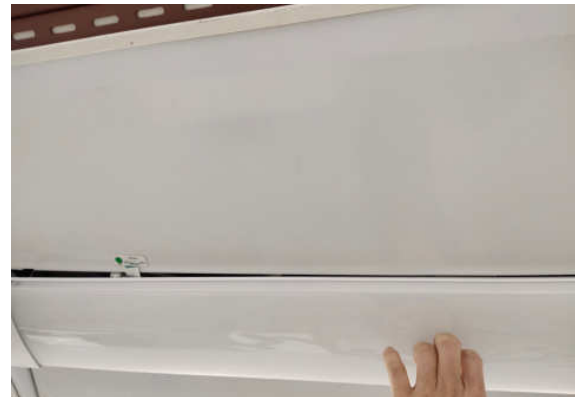
5) Connect respectively the input wires from EM driver with wires of AC power supply by wiring caps, **black wire and red wire connect to black wire (L) together** , white wire to white wire (N), green wire to green wire(G)



6) Put the indicated light wire (paper) from EM driver stickup on edge surface of long side part



7) Put all showed wires back outside to inside of fixture to hide them(Not let them to effect the main part installed). And then rotate central light engine part to horizontal place and then push it a little to make it secured with 2 end bracket parts



## Step 6

Turn on AC power supply switch and light up the troffer retrofit



### ※ WARNING

THIS LUMINAIRE IS PROVIDED WITH A FACTORY INSTALLED EMERGENCY  
LIGHTING CONTROL DEVICE