

2 FT. LINEAR LED NANO TUBE



JAYKAL

PROJECT NAME:

JAYKAL LED SOLUTIONS, INC.

www.jaykal.net

PROJECT NOTES:

26832 Lewes Georgetown Hwy,
Building 2, Unit E
Harbeson, DE 19951
(P) 302-295-0015
(F) 302-295-0016

OVERVIEW:

Every year there are new breakthroughs in LED technology. One of the most popular for 2016-2017 has been the **Nano LED lamp**. It is already being used in facilities which require strict safety regulations. This evolutionary material enables Jaykal to provide high quality products that also have a competitive price.

BENEFITS OF NANO PLASTIC TUBES

Nano-plastic T8 LED tubes have excellent performance, remaining stable for long periods of time for straightness, length variance, discoloration, light transmittance, extreme temperature and oxidation tests.

Normal polycarbonate lenses thickness is approx. 0.8-1mm and heat dissipation is completely dependent on how much aluminum is present in the tube design. A Nano-plastic linear tube has only 0.4-0.5mm thickness and superior thermal conductivity.

Nano-plastic uses Nano-scale guided particles. It spreads light more evenly and softens the LED light, reducing glare emitted. Due to the Nano-plastic's features, light is more evenly distributed, causing the light to appear softer and diffuse.

FEATURES:

- ◆ 300+° Beam Angle
- ◆ UL Type A, B and C
- ◆ Survives Drop Test from 6 Feet



RoHS
Compliant



BAA
Compliant

7 YEAR WARRANTY

(P) 302-295-0015 | (E) sales@jaykal.net | (W) www.jaykal.net

Specifications are typical values and may change without notification

efficiency. illuminated.



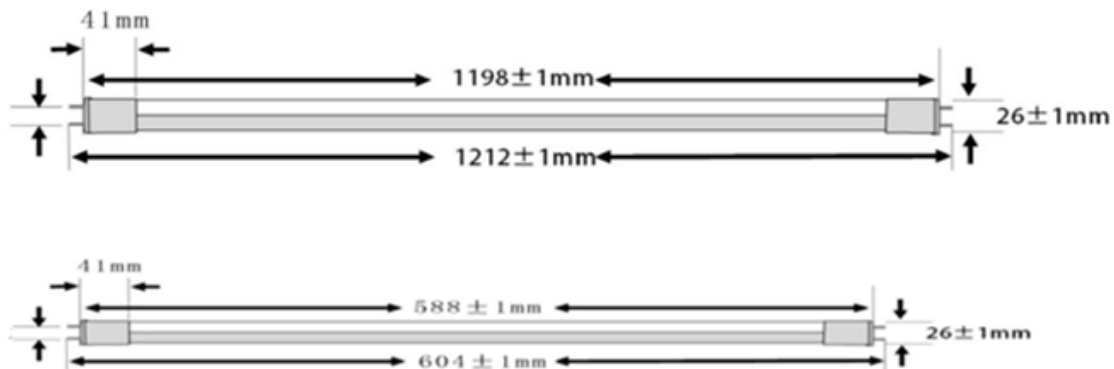
2 FT. NANO SERIES LINEAR LED LAMPS

JAYKAL

SPECIFICATIONS TABLE

MODEL	JLS68101-2-XXK-U-W-X-NANO-Y-Z			
Input Voltage	100-277VAC 50/60hz			
Wattage	6W	7W	8W	10W
Efficacy	≈165lm/W	≈160lm/W	≈160lm/W	≈150lm/W
Lumens	990lm	1,120lm	1,280lm	1,500lm
Power Factor	>0.9			
THD	<20%			
Beam Angle	330°			
CRI	Ra > 80			
L70 Hours	>63,000			
CCT	3000K/4000K/5000K/6500K			
Working Temp.	-20°C - +45°C			
Housing	Nano			

Physical Dimensions



ORDERING GUIDE

JLS68101-2-40K-F-10-EX-NANO-S-1

MODEL #	LENGTH	CCT	LENS	WATTS	TYPE	HOUSING	DRIVER	LAMPS
JLS68101	2 = 2 Foot	30K = 3000K 40K = 4000K 50K = 5000K 65K = 6500K	F = Frosted	6 = 6W 7 = 7W 8* = 8W 10 = 10W *DW Only	BC = Ballast Compatible DW = Direct Wire EX = External	NANO = Nano Plastic	S = Standard *FF = Flicker Free *DW/EX Only	*1 = 1 Lamp *2 = 2 Lamp *3 = 3 Lamp *4 = 4 Lamp * EX Drivers Only

(P) 302-295-0015 | (E) sales@jaykal.net | (W) www.jaykal.net

Specifications are typical values and may change without notification

efficiency. illuminated.

2 FT. NANO SERIES LINEAR LED LAMPS



JAYKAL

STANDARD EXTERNAL DRIVER SPECIFICATIONS

LAMPS	WATTAGE	INPUT VOLTAGE	PF	OUTPUT VOLTAGE	OUTPUT mA	MODEL NUMBER
1	6	100-277VAC	>0.9	DC 40V MAX	143mA	JLS6810D-06W-40-S-N-3
	7	100-277VAC	>0.9	DC 40V MAX	167mA	JLS6810D-07W-40-S-N-3
	10	100-277VAC	>0.9	DC 40V MAX	240mA	JLS6810D-10W-40-S-N-3
2	12	100-277VAC	>0.9	DC 42V MAX	286mA	JLS6810D-12W-42-S-N-4
	14	100-277VAC	>0.9	DC 42V MAX	334mA	JLS6810D-14W-42-S-N-4
	20	100-277VAC	>0.9	DC 42V MAX	480mA	JLS6810D-20W-42-S-N-4
3	18	100-277VAC	>0.9	DC 42V MAX	430mA	JLS6810D-18W-42-S-N-4
	21	100-277VAC	>0.9	DC 42V MAX	500mA	JLS6810D-21W-42-S-N-4
	30	100-277VAC	>0.9	DC 42V MAX	710mA	JLS6810D-30W-42-S-N-4
4	24	100-277VAC	>0.9	DC 42V MAX	570mA	JLS6810D-24W-42-S-N-4
	28	100-277VAC	>0.9	DC 42V MAX	670mA	JLS6810D-28W-42-S-N-4
	40	100-277VAC	>0.9	DC 42V MAX	950mA	JLS6810D-40W-42-S-N-4

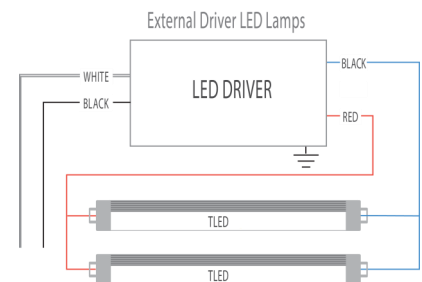
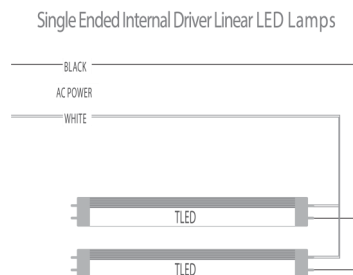
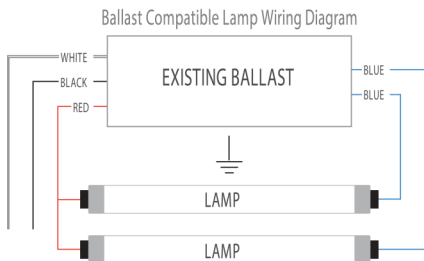
FLICKER FREE EXTERNAL DRIVER SPECIFICATIONS

LAMPS	WATTAGE	INPUT VOLTAGE	PF	OUTPUT VOLTAGE	OUTPUT mA	MODEL NUMBER
1	6	100-277VAC	>0.9	DC 40V MAX	143mA	JLS6810D-06W-40-FF-N-3
	7	100-277VAC	>0.9	DC 40V MAX	167mA	JLS6810D-07W-40-FF-N-3
	10	100-277VAC	>0.9	DC 40V MAX	240mA	JLS6810D-10W-40-FF-N-3
2	12	100-277VAC	>0.9	DC 42V MAX	286mA	JLS6810D-12W-42-FF-N-4
	14	100-277VAC	>0.9	DC 42V MAX	334mA	JLS6810D-14W-42-FF-N-4
	20	100-277VAC	>0.9	DC 42V MAX	480mA	JLS6810D-20W-42-FF-N-4
3	18	100-277VAC	>0.9	DC 42V MAX	430mA	JLS6810D-18W-42-FF-N-4
	21	100-277VAC	>0.9	DC 42V MAX	500mA	JLS6810D-21W-42-FF-N-4
	30	100-277VAC	>0.9	DC 42V MAX	710mA	JLS6810D-30W-42-FF-N-4
4	24	100-277VAC	>0.9	DC 42V MAX	570mA	JLS6810D-24W-42-FF-N-4
	28	100-277VAC	>0.9	DC 42V MAX	670mA	JLS6810D-28W-42-FF-N-4
	40	100-277VAC	>0.9	DC 42V MAX	950mA	JLS6810D-40W-42-FF-N-4

DRIVER IS AVAILABLE WITH 0-10V DIMMING OPTION: N = NON-DIMMING / 10 = 0-10V

EXAMPLE: JLS6810D-40W-42-FF-10-4

Wiring Diagrams



(P) 302-295-0015 | (E) sales@jaykal.net | (W) www.jaykal.net

Specifications are typical values and may change without notification

efficiency. illuminated.