

12 WATT EMERGENCY BACKUP



JAYKAL

PROJECT NAME:

JAYKAL LED SOLUTIONS, INC.

www.jaykal.net

PROJECT NOTES:

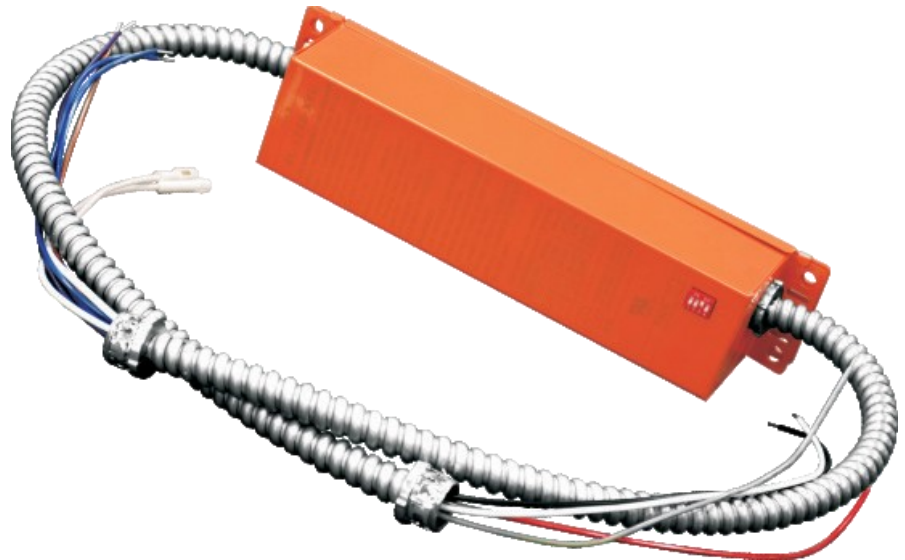
26832 Lewes Georgetown Hwy,
Building 2, Unit E
Harbeson, DE 19951
(P) 302-295-0015
(F) 302-295-0016

DESCRIPTION:

New from Jaykal, UL Listed backup allows the same LED fixture to be used for both normal and emergency operation. In the event of a power failure, the LED Emergency Equipment switches to the emergency mode and operates the existing fixture for 90 minutes. The unit contains a battery, charger, and converter circuit in a single can and is available in different mounting configurations for individual fixture requirements.

FEATURES & BENEFITS:

- ◆ Includes Test Switch and Charge Indicator
- ◆ Battery: High Temperature Ni-CAD, 7-10 Year Life Expectancy
- ◆ Recharging time: 24 hours
- ◆ Emergency Operation: > 90 Minutes
- ◆ Input Voltage: 100-277VAC 50/60Hz
- ◆ DIP Switch Configurable



5 YEAR STANDARD WARRANTY—EXTENDED WARRANTIES AVAILABLE

(P) 302-295-0015 | (E) sales@jaykal.net | (W) www.jaykal.net

Specifications are typical values and may change without notification

efficiency. illuminated.

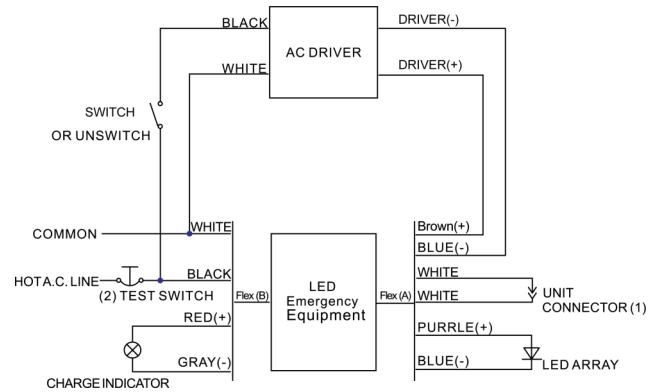
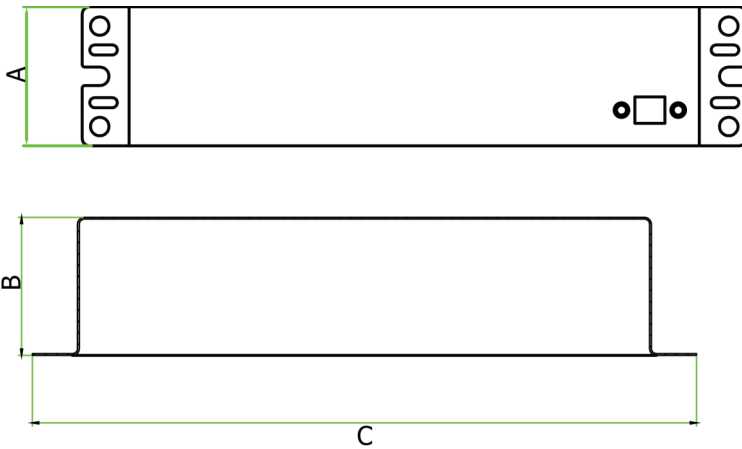
12 WATT EMERGENCY BACKUP



JAYKAL

SPECIFICATIONS TABLE

Model	JLS6810D-G12-ED
Input Voltage	100-277VAC 50/60Hz
Input Power	4.8 Watts (Max)
Output Voltage	12V-48VDC
Max. Connected Load	0.75 A
Output Power	12W (Max)
Emergency Operation	>90 Minutes
Battery	High Temperature Nickel-Cadmium
UL Conditions of Acceptability	Must be factory wired. Battery temperature must not exceed 50°C



Dimensions	
A	55.4 mm / 2.18 Inches
B	55.0 mm / 2.16 Inches
C	264.6 mm / 10.41 Inches

Model	Power	DIP	Voltage	Current
JLS6810D-G12-ED	12W	1	12-16V	0.75A
		2	16-24V	0.5A
		3	24-36V	0.33A
		4	36-48V	0.25A

ORDERING INFORMATION

MODEL NUMBER	-
JLS6810D-G12-ED	

(P) 302-295-0015 | (E) sales@jaykal.net | (W) www.jaykal.net

Specifications are typical values and may change without notification

efficiency. illuminated.